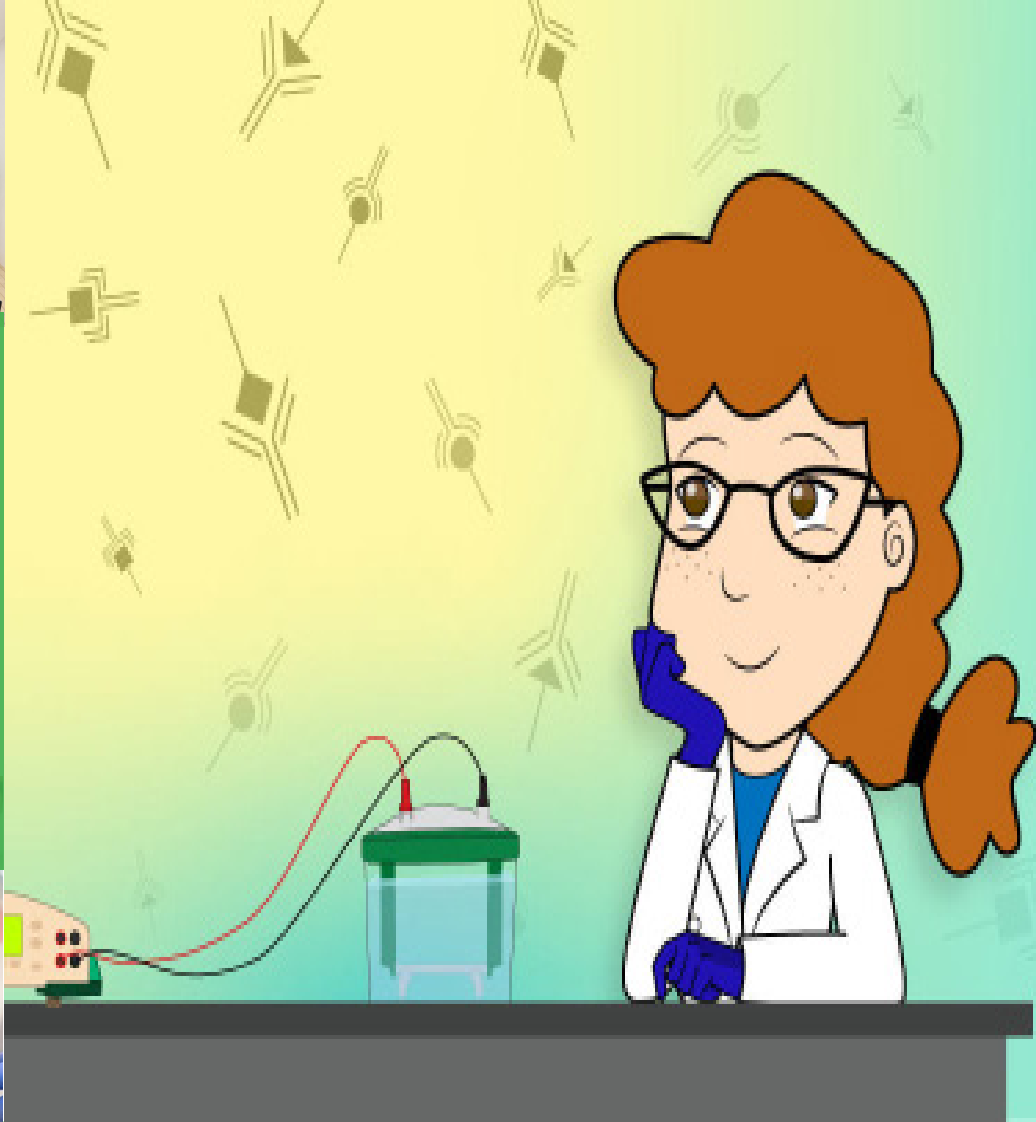




Based on Abbkine Proteomics Research Workstation, we provide Western Blot (WB) product portfolio for global scientific researchers.



## Western Blot Product Portfolio

# Product catalog

## Western blot (WB) overview

- Sample preparation ..... 1
- Protein quantification ..... 2
  - Protein concentration determination ... 2
  - HRP substrate kits ..... 2
  - Colorcode prestained protein marker ... 2
- Protein detection antibodies ..... 3
  - Loading control antibodies ..... 3
  - Tag antibodies ..... 4
  - Primary antibodies ..... 5
  - Secondary antibodies ..... 6

# INTRODUCTION

Abbkine scientists have been devoted to immunology and cytology research, developing and providing high-quality products in order to accelerate life science research. We provide global life science researchers with the basic research tools at reasonable prices and excellent quality to advance human and animal health research.

Abbkine has been focusing on development in scientific research and medical field for many years. More than 90% of the products belong to Abbkine's independent research, development, production. Abbkine continue to develop new product lines that meet market needs. Abbkine maintains long-term and stable exchanges and cooperation with life science and technology service providers from 30 countries and well-known research institutions (including the United States, United Kingdom, Germany, Japan, etc.).

Western blotting (WB), is an experimental method commonly used in molecular biology, biochemistry, and immunogenetics. Based on Abbkine Proteomics Research Workstation, we provide global researchers with WB product portfolio, including protein extraction, protein quantification, loading control antibodies, epitope & tag antibodies, primary antibodies, secondary antibodies, and professional technical consulting and services.

Our most popular WB related products are listed in this manual, you can also visit [www.abbkine.com](http://www.abbkine.com) to view our complete products. Abbkine will continue to develop more WB related products.

Based on the mature WB technology platform, we provide WB protein detection services, including protein extraction and quantification, SDS-PAGE, transmembran, incubation of antibodies, ECL, scanning imaging, etc. Service cycle are 2-4 weeks, which is just to speed up your scientific research process! Please contact [service@abbkine.com](mailto:service@abbkine.com) for more technical service information!



# Western blot (WB) overview

Western Blot (western blot test) is an experimental method commonly used in molecular biology, biochemistry and immunogenetics.

The basic principle is to color the cell or biological tissue samples treated by gel electrophoresis through specific antibodies.

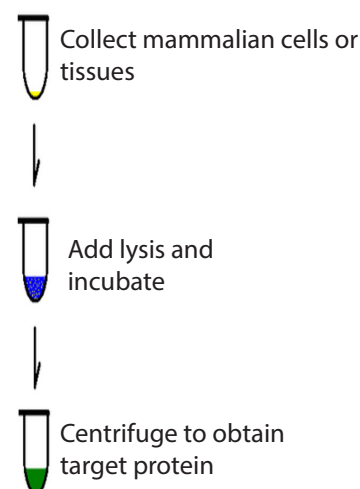
Information on the expression of specific proteins in the analyzed cells or tissues is obtained by analyzing the staining position and staining depth.



## 1. Sample preparation

The perfect protein is half of WB success. We need to lyse cells and tissues to extract the target protein. Once lysis occurs, hydrolysis, dephosphorylation, and denaturation begin. If appropriate proteases or phosphatase inhibitors are added to the lysate, these reactions will be greatly slowed down, and the chance of extracting good protein will increase.

Product Name	Cat. No.	Size	Price(\$)
ExKine™ Nuclear and Cytoplasmic Protein Extraction Kit	KTP3001	50/200T	90/220
ExKine™ Nuclear Protein Extraction Kit	KTP3002	50/200T	80/200
ExKine™ Cytoplasmic Protein Extraction Kit	KTP3003	50/200T	80/200
ExKine™ Total Membrane Protein Extraction Kit	KTP3004	50/200T	80/200
ExKine™ Membrane and Cytoplasmic Protein Extraction Kit	KTP3005	50/200T	90/220
ExKine™ Total Protein Extraction Kit	KTP3006	50/200T	80/200
Protease Inhibitor Cocktail (100X)	BMP1001	1mL/1mLx5	40/120



### Features and advantages of Abbkine protein extraction:

- High purity-The extracted protein has high purity and maintains natural activity, reducing cross-contamination.
- Strong efficiency-Purified non-denatured active protein within two hours.
- Compatible applications-The extracted protein can be directly used in subsequent proteomics applications.
- Super high guarantee-Have a special protease inhibitor set to prevent degradation.
- Good price and high quality-It is affordable in the same type of products and the cost performance is extremely high.

### Features and advantages of Abbkine protease inhibitors:

- It is composed of multiple groups.
- Including AEBSF, Aprotinin, Bestatin, E-64, Leupeptin and Pepstatin A, with broad specificity for cysteine, serine, acid protease and aminopeptidase.
- This protease inhibitor cocktail has been optimized and tested with mammalian cell and tissue extracts.



## 2. Protein quantification

Accurate protein quantification is necessary for WB, which involves research topics in molecular biology, cell biology, biochemistry, developmental biology, and neuroscience.

Abbkine protein quantification series products include protein quantification kits (BCA assay and Bradford assay), WB developing solution ECL (picogram grade and femtogram grade), color pre-stained protein marker, etc.

### 2.1 Protein concentration determination

Product Name	Cat. No.	Size	Price(\$)
Protein Quantification Kit (BCA Assay)	KTD3001	500/2000/5000T	45/100/180
Protein Quantification Kit (Bradford Assay)	KTD3002	500/2000/5000T	30/70/120

For protein quantification, BCA assay or Bradford assay?

\* If the sample lysate contains a higher concentration of detergent (SDS, Triton X-100, Tween 20, etc.), select the BCA assay.

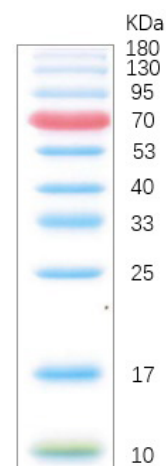
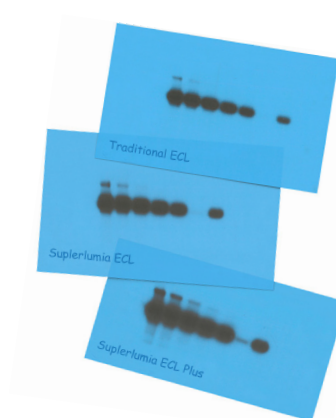
\* If the sample lysate contains a higher concentration of reducing agents (DTT, TCEP,  $\beta$ -mercaptoethanol, etc.), select the Bradford assay.

### 2.2 HRP substrate kits

Product Name	Cat. No.	Size	Price(\$)
SuperLumia ECL HRP Substrate Kit (picogram)	K22020	30/100/200/500mL	30/75/140/280
SuperLumia ECL Plus HRP Substrate Kit (femtogram)	K22030	30/100/200/500mL	45/110/210/440

The family of SuperLumia ECL substrates is a series of ready-to-use chemiluminescent reagents for the detection of HRP-based Western Blot.

- The highest sensitive detection with femtogram level.
- Same quality and performance with affordable price.
- Extremely sensitive at femtogram level, require much less sample and antibodies.
- Intense signal output and long duration.
- Pouring directly onto the blot membrane.
- Bulk size with special price is available upon request.



### 2.3 Colorcode prestained protein marker

Product Name	Cat. No.	Size	Price(\$)
Colorcode Prestained Protein Marker (10-180 kDa)	BMM3001	100 $\mu$ L/250 $\mu$ Lx2/250 $\mu$ Lx20	20/62/496



### 3. Protein detection antibodies

Antibodies are the type of immunoglobulins which can specifically bind to an antigen. Antibodies are practical tools for immunology experiments, such as WB, IHC, IF and FCM. Abbkine protein detection antibodies include: loading control antibodies, epitope & tag antibodies, primary antibodies, secondary antibodies.

#### 3.1 Loading control antibodies

It is used to evaluate the efficiency of Western blotting and compare the amount of protein loaded per well in the gel. We provide a full set of loading control antibodies, including popular indicators (such as  $\beta$ -Actin, GAPDH, etc.) and specific species (such as plants, zebrafish, yeast, etc.).

How to choose an appropriate loading control antibodies? 1) Consider the location of the target protein; 2) The molecular weight of the loading control protein and the target protein must be at least 5KD difference in order to distinguish the target protein band.

Product Name	Cat. No.	Target protein localization	Reactivity	Applications	Size	Price(\$)
Anti- $\beta$ -Actin Mouse Monoclonal Antibody (1C7)	A01010	Whole Cell Loading Control (43KD)	Human, Mouse, Rat, Monkey, Dog, Chicken, Rabbit, Insect, Hamster	WB, IHC-P, IF	50/200/200 $\mu$ Lx5	90/260/860
Anti-beta Actin Rabbit Polyclonal Antibody	A01011		Human, Mouse, Rat, Rabbit, Chicken, Monkey, Sheep, Xneous	WB, IHC-P	50/200/200 $\mu$ Lx5	90/260/860
Anti-GAPDH Mouse Monoclonal Antibody (2B5)	A01020	Whole Cell Loading Control (37KD)	Human, Mouse, Rat, Monkey, Dog, Chicken, Rabbit, Pig, Sheep, Insect, Yeast, Hamster	WB, IHC-P, IF	50/200/200 $\mu$ Lx5	90/260/860
Anti-GAPDH Rabbit Polyclonal Antibody	A01021		Human, Mouse, Rat, Rabbit, Chicken, Monkey, Sheep, Xneous	WB, IHC-P	50/200/200 $\mu$ Lx5	90/260/860
Anti- $\beta$ -Tubulin Mouse Monoclonal Antibody (3G6)	A01030	Whole Cell Loading Control (55KD)	Human, Mouse, Rat, Monkey, Dog, Chicken, Rabbit, Sheep, Insect, Yeast, Hamster	WB, IHC-P, IF	50/200/200 $\mu$ Lx5	90/260/860
Anti-Plant Actin Mouse Monoclonal Antibody (3T3)	A01050	Plant Loading Control (43KD)	Corn, Arabidopsis, Rape	WB	50/200/200 $\mu$ Lx5	90/260/860
Anti-PCNA Mouse Monoclonal Antibody (1D7)	A01040	Nuclear Loading Control (29KD)	Human, Mouse, Rat	WB, IHC-P, IF	50/200/200 $\mu$ Lx5	90/260/860
Anti-Histone H3 Mouse Monoclonal Antibody (2D10)	A01070	Nuclear Loading Control (15KD)	Human, Mouse, Rat, Yeast	WB, IHC-P, IF, IP	50/200/200 $\mu$ Lx5	90/260/860
Anti-Histone H3 Monoclonal Antibody (2D9)	A01100		Zebrafish	WB	50/200/200 $\mu$ Lx5	90/260/860

\* For more loading control antibodies, please visit [www.abbkine.com](http://www.abbkine.com).

\* With advanced protein Labeling technology, we provide high-quality labeling loading control antibodies. Conjugates include HRP, biotin, FITC, Cy3, Cy5, agarose, magnetic beads, and AbFluor™ fluorophores (350, 405, 488, 555, 594, 647, 680).



## 3.2 Tag antibodies

Epitope tags are often used with recombinant protein expression systems in *E. coli*, yeast, or mammalian cells to help researchers selectively extract target proteins from endogenous samples.

Abbkine provides a full set of epitope tag monoclonal and polyclonal antibody portfolio, with high specificity and multiple application types, such as GST tag, His tag, HA tag, DDDDK (flag) tag, Myc tag, MBP tag and mCherry tag.

Product Name	Cat. No.	Applications	Size	Price(\$)
Anti-DDDDK Tag Mouse Monoclonal Antibody (1B10)	A02010	WB, IP, IF	50/200/200µLx5	90/260/860
Anti-DDDDK Tag Mouse Monoclonal Antibody (1B10), Agarose	A02010AGB	IP	100µL/400µL/2mL	110/290/900
Anti-DDDDK Tag Mouse Monoclonal Antibody (1B10), Magnetic Beads	A02010MGB	IP	100µL/400µL/2mL	120/310/1000
Anti-GFP Tag Mouse Monoclonal Antibody (3D3)	A02020	WB	50/200/200µLx5	90/260/860
Anti-GFP Tag Rabbit Polyclonal Antibody	A02021	WB	50/200/200µLx5	90/260/860
Anti-GST Tag Mouse Monoclonal Antibody (2A8)	A02030	WB	50/200/200µLx5	90/260/860
Anti-HA Tag Mouse Monoclonal Antibody (4F6)	A02040	WB, IP, IF	50/200/200µLx5	90/260/860
Anti-HA Tag Mouse Monoclonal Antibody (4F6), Agarose	A02040AGB	IP	100µL/400/µL/2mL	110/290/900
Anti-HA Tag Mouse Monoclonal Antibody (4F6), Magnetic Beads	A02040MGB	IP	100µL/400/µL/2mL	120/310/1000
Anti-His Tag Mouse Monoclonal Antibody (5C3)	A02050	WB, IP, IF	50/200/200µLx5	90/260/860
Anti-His Tag Mouse Monoclonal Antibody (5C3), Agarose	A02050AGB	IP	100µL/400/µL/2mL	110/290/900
Anti-His Tag Mouse Monoclonal Antibody (5C3), Magnetic Beads	A02050MGB	IP	100µL/400/µL/2mL	120/310/1000
Anti-Myc Tag Mouse Monoclonal Antibody (2D5)	A02060	WB, IP, IF	50/200/200µLx5	90/260/860
Anti-Myc Tag Mouse Monoclonal Antibody (2D5), Agarose	A02060AGB	IP	100µL/400/µL/2mL	110/290/900
Anti-Myc Tag Mouse Monoclonal Antibody (2D5), Magnetic Beads	A02060MGB	IP	100µL/400/µL/2mL	120/310/1000
Anti-MBP Tag Mouse Monoclonal Antibody (9Y5)	A02070	WB	50/200/200µLx5	90/260/860
Anti-mCherry Tag Mouse Monoclonal Antibody (9D3)	A02080	WB, IF	50/200/200µLx5	90/260/860

\* For more tag antibodies, please visit [www.abbkine.com](http://www.abbkine.com).

\* Abbkine provides a variety of conjugated tag antibodies. Conjugates include biotin, HRP, AbFluor™ dye, agarose and magnetic beads to meet your different experimental needs.



### 3.3 Primary antibodies

Combined with a complete product line of internal antibodies and labeled antibodies, Abbkine has carefully selected key targets with article popularity for the core research areas such as signaling pathways, neuroscience, cytoskeleton, cancer, epigenetics, etc.

The selected primary antibodies have been detected by strict quality control and have quality commitment, all the application types displayed are experimentally verified by Abbkine scientists, which are true and reliable.

Product Name	Cat. No.	Reactivity	Applications	Size	Price(\$)
Bcl-2 Monoclonal Antibody	ABM0010	Human, Mouse, Rat, Chicken	WB, IHC-P, IF	100µL	280
p53 Polyclonal Antibody	ABP0110	Human, Mouse, Rat, Monkey	WB, IHC-P, IF	100µL	280
NFκB-p65 (phospho Ser536) Polyclonal Antibody	ABP0043	Human, Mouse, Rat, Monkey	WB, IHC-P, IF, IP	100µL	280
α-SMA Monoclonal Antibody	ABM0052	Human, Mouse, Rat	WB, IHC-P, IF	100µL	280
NFκB p65 Monoclonal Antibody	ABM0017	Human, Mouse, Rat	WB, IHC-P, IP	100µL	280
GFAP Monoclonal Antibody	ABM0021	Mouse, Rat	WB, IHC-P, IF	100µL	280
Akt Polyclonal Antibody	ABP0059	Human, Mouse, Rat	WB, IHC-P, IF	100µL	280
ERK 1/2 Polyclonal Antibody	ABP0085	Human, Mouse, Rat	WB, IHC-P, IF	100µL	280
TNF-α Polyclonal Antibody	ABP0127	Human, Mouse, Rat	WB, IHC-P, IF	100µL	280
α-SMA Polyclonal Antibody	ABP0183	Human, Mouse, Rat	WB, IHC-P, IF	100µL	280
p38 (phospho Thr180/Y182) Polyclonal Antibody	ABP0047	Human, Mouse, Rat, Guinea pig	WB, IHC-P, IF	100µL	280
CD63 Polyclonal Antibody	ABP0145	Human	WB, IHC-P, IF	100µL	280
Cleaved-Caspase-3 p17 (D175) Polyclonal Antibody	ABP0021	Human, Mouse, Rat	WB, IHC-P, IF	100µL	280
SNAI 1 Polyclonal Antibody	ABP0121	Human, Mouse, Monkey	WB, IHC-P, IF	100µL	280
PI 3-kinase p85/p55 (phospho Tyr467/199) Polyclonal Antibody	ABP0163	Human, Mouse, Rat, Monkey	WB, IHC-P, IF	100µL	280
Beclin-1 Mouse Monoclonal Antibody (5C2)	ABM0079	Human, Mouse, Rat	WB, IHC-P	100µL	280
ERK 1/2 (phospho Tyr204) Polyclonal Antibody	ABP0035	Human, Mouse, Rat	WB, IHC-P, IF	100µL	280
IκB-α (phospho Ser32/S36) Polyclonal Antibody	ABP0038	Human, Mouse, Rat, Monkey	WB, IHC-P, IF	100µL	280
Stat1 (phospho Tyr701) Polyclonal Antibody	ABP0045	Human, Mouse, Rat, Monkey	WB, IHC-P, IF, IP	100µL	280

\* For more primary antibodies, please visit [www.abbkine.com](http://www.abbkine.com).



### 3.4 Secondary antibodies

Secondary antibody refers to an antibody used to target the primary antibody.

In immunoblotting experiments such as WB, ELISA, and IF, secondary antibodies and primary antibodies are used in combination to detect the target protein.

The secondary antibody often carries a label, and the label is usually horseradish peroxidase (HRP).

Product Name	Cat. No.	Applications	Size	Price(\$)	Description
HRP, Goat Anti-Mouse IgG	A21010	WB, IHC, ELISA	100/500µL	25/100	HRP conjugated secondary antibody
HRP, Goat Anti-Rabbit IgG	A21020	WB, IHC, ELISA	100/500µL	25/100	HRP conjugated secondary antibody
Dylight 680, Goat Anti-Mouse IgG	A23710	WB, IF, ICC, FC	100/500µL	40/160	Odyssey secondary antibody
Dylight 680, Goat Anti-Rabbit IgG	A23720	WB, IF, ICC, FC	100/500µL	40/160	Odyssey secondary antibody
Dylight 800, Goat Anti-Mouse IgG	A23910	WB, IF, ICC, FC	100/500µL	40/160	Odyssey secondary antibody
Dylight 800, Goat Anti-Rabbit IgG	A23920	WB, IF, ICC, FC	100/500µL	40/160	Odyssey secondary antibody
IPKine™ HRP, Goat Anti-Mouse IgG LCS	A25012	WB, IHC, ELISA	100/500µL	70/280	IP-WB secondary antibody
IPKine™ HRP, Mouse Anti-Rabbit IgG LCS	A25022	WB, IHC, ELISA	100/500µL	70/280	IP-WB secondary antibody
IPKine™ HRP, Goat Anti-Mouse IgG HCS	A25112	WB, IHC, ELISA	100/500µL	70/280	IP-WB secondary antibody
IPKine™ HRP, Goat Anti-Rabbit IgG HCS	A25222	WB, IHC, ELISA	100/500µL	70/280	IP-WB secondary antibody

\* If the laboratory is equipped with an Odyssey infrared laser imaging system, you can choose a secondary antibody combined with infrared dyes (such as Dylight 680 or Dylight 800), direct imaging without development.

\*Abbkine's IPKine™ series of products can effectively solve the problem of light and heavy chain interference and bring you perfect and expected results.

#### Abbkine DyLight secondary antibodies:

Product Name	Cat. No.	Applications	Size	Price(\$)	Spectra
DyLight 488, Goat Anti-Mouse IgG	A23210	IF, ICC, FC	100/500µL	40/160	Green
Dylight 488, Goat Anti-Rabbit IgG	A23220	IF, ICC, FC	100/500µL	40/160	Green
Dylight 549, Goat Anti-Mouse IgG	A23310	IF, ICC, FC	100/500µL	40/160	Yellow
Dylight 549, Goat Anti-Rabbit IgG	A23320	IF, ICC, FC	100/500µL	40/160	Yellow
Dylight 594, Goat Anti-Mouse IgG	A23410	IF, ICC, FC	100/500µL	40/160	Orange
Dylight 594, Goat Anti-Rabbit IgG	A23420	IF, ICC, FC	100/500µL	40/160	Orange

\* For more secondary antibodies, please visit [www.abbkine.com](http://www.abbkine.com).



# Abbkine products published literature:

Abbkine products with excellent quality have been widely used by customers around the world, and Abbkine's name has begun to appear frequently in the world's top magazines.

If you have published an article using Abbkine products, we sincerely invite you to contact us at email: [support@abbkine.com](mailto:support@abbkine.com). We have prepared super value rewards for you!



Bph6 encodes an exocyst-localized protein and confers broad resistance to planthoppers in rice. (IF: 19.88)  
Abbkine Product: Anti-Plant Actin Mouse Monoclonal Antibody (3T3) (CAT# A01050)

The deubiquitinating enzyme cylindromatosis mitigates nonalcoholic steatohepatitis. (IF: 19.14)  
Abbkine Product: HRP, Goat Anti-Rabbit IgG (CAT# A21020)

Verification of Differential Expression Genes after CacyBP/SIP Nuclear Translocation in Colon Carcinoma Cell Line. Journal of the American Chemical Society. (IF: 14.75)  
Abbkine Product: Anti-PCNA Mouse Monoclonal Antibody (1D7) (CAT# A01040)

Identification of serum metabolites associating with chronic kidney disease progression and anti-fibrotic effect of 5-methoxytryptophan. (IF: 12.41)  
Abbkine Product: HRP, Goat Anti-Mouse IgG (CAT# A21010)

Autism-like social deficit generated by Dock4 deficiency is rescued by restoration of Rac1 activity and NMDA receptor function. (IF: 9.56)  
Abbkine Product: Anti-GAPDH Mouse Monoclonal Antibody (2B5) (CAT# A01020)

The dual role of poly(ADP-ribose) polymerase-1 in modulating parthanatos and autophagy under oxidative stress in rat cochlear marginal cells of the stria vascularis. (IF: 8.37)  
Abbkine Product: HRP, Goat Anti-Rabbit IgG (CAT# A21020)

The dual role of poly(ADP-ribose) polymerase-1 in modulating parthanatos and autophagy under oxidative stress in rat cochlear marginal cells of the stria vascularis. (IF: 8.37)  
Abbkine Product: Anti-Histone H3 Mouse Monoclonal Antibody (2D10) (CAT# A01070)

TRIM32/USP11 Balances ARID1A Stability and the Oncogenic/Tumor-Suppressive Status of Squamous Cell Carcinoma. (IF: 8.04)  
Abbkine Product: ExKine™ Nuclear and Cytoplasmic Protein Extraction Kit (CAT# KTP3001)

DIPK2A promotes STX17- and VAMP7-mediated autophagosome-lysosome fusion by binding to VAMP7B. Autophagy. (IF: 7.01)  
Abbkine Product: IPKine™ HRP, Goat Anti-Mouse IgG HCS (CAT# A25112)

CAV1-CAVIN1-LC3B-mediated autophagy regulates high glucose-stimulated LDL transcytosis. Autophagy. (IF: 7.01)  
Abbkine Product: IPKine™ HRP, Goat Anti-Rabbit IgG HCS (CAT# A25222)

Small interfering RNA delivery to the neurons near the amyloid plaques for improved treatment of Alzheimer's disease. (IF: 6.88)  
Abbkine Product: Anti-GFP Tag Mouse Monoclonal Antibody (3D3) (CAT# A02020)

FBW7 loss promotes epithelial-to-mesenchymal transition in non-small cell lung cancer through the stabilization of Snail protein. (IF: 6.5)  
Abbkine Product: Anti-Myc Tag Mouse Monoclonal Antibody (2D5) (CAT# A02060)

FBW7 loss promotes epithelial-to-mesenchymal transition in non-small cell lung cancer through the stabilization of Snail protein. (IF: 6.5)  
Abbkine Product: Anti-DDDDK Tag Mouse Monoclonal Antibody (1B10) (CAT# A02010)

Prostaglandin F2 $\alpha$  Facilitates Hepatic Glucose Production Through CaMKII $\gamma$ /p38/FoxO1-Signaling Pathway in Fasting and Obesity. (IF: 5.64)  
Abbkine Product: Anti-mCherry Tag Mouse Monoclonal Antibody (9D3) (CAT# A02080)

Tumoral microvesicle-activated glycometabolic reprogramming in fibroblasts promotes the progression of oral squamous cell carcinoma. (IF: 5.595)  
Abbkine Product: Anti- $\beta$ -Tubulin Mouse Monoclonal Antibody (3G6) (CAT# A01030)

Tumoral microvesicle-activated glycometabolic reprogramming in fibroblasts promotes the progression of oral squamous cell carcinoma. (IF: 5.595)  
Abbkine Product: Anti- $\beta$ -Actin Mouse Monoclonal Antibody (1C7) (CAT# A01010)

A novel peptide exerts potent immunosuppression by blocking the two-site interaction of NFAT with calcineurin. (IF: 3.92)  
Abbkine Product: Anti-DDDDK Tag Mouse Monoclonal Antibody (1B10), Agarose (CAT# A02010AGB)

Effects of programmed cell death protein 10 on fecundity in *Schistosoma japonicum*. (IF: 2.36)  
Abbkine Product: Protein Quantification Kit (BCA Assay) (CAT# KTD3001)

Abbkine Scientific Co., Ltd. was founded by a number of scientists and marketing experts in the field of life science in California, USA in 2012. With growing demands from Asia Pacific, it moves its headquarters to China. Combining cutting edge technology from United States with China's manufacturing engineering and cost advantages, we aim to provide innovative, high quality assay kits, recombinant proteins, antibodies and other research tools to accelerate life science fundamental research, drug discovery, etc.

Contact us:

Tel: +86-27-59716789

or your local distributors

Address: Bldg C17, Optics Valley International Biomedicine Park, Wuhan, China. 430223

---

Abbkine's mission: to inspire our inner creativity, provide competitive biomedical products and services, and continue to create maximum value for our customers. We will provide affordable, high-quality protein and cell products to life science researchers worldwide through clear corporate strategies and values of passion, dedication, learning, innovation, cooperation, and excellence to achieve our mission.



[www.abbkine.com](http://www.abbkine.com)  
Abbkine Scientific Co., Ltd.

