


## Human CD38 protein, His tag (Animal-Free)

Cat #: PRP2027

Size: 10 µg/50 µg/100 µg/1 mg

### Product Information

	<b>Product Name:</b> Human CD38 protein, His tag (Animal-Free)		
<b>REF</b>	<b>Catalog Number:</b> PRP2027	<b>LOT</b>	<b>Lot Number:</b>
	<b>Purity:</b> >95% as determined by SDS-PAGE		
	<b>Storage:</b> Store at -20°C		<b>Preparation method:</b> HEK 293 cells
	<b>Shipping:</b> The product is shipped at ambient temperature		

**Background:** CD38, also known as ADP-ribosyl cyclase, is a Type II integral membrane protein. The enzyme is able to transform NAD(P)+ into three different products with calcium mobilizing ability, cyclic ADP-ribose, NAADP+, and ADP-ribose. CD antigen CD38 is also known as ADP-ribosyl cyclase 1, which belongs to the ADP-ribosyl cyclase family. CD38 is expressed at high levels in pancreas, liver, kidney, brain, testis, ovary, placenta, malignant lymphoma and neuroblastoma. CD38 is a multifunctional ectoenzyme that catalyzes the synthesis and hydrolysis of cyclic ADP-ribose (cADPR) from NAD+ to ADP-ribose. CD38 is expressed in B and T lymphocytes, osteoclasts, and in cardiac, pancreatic, liver and kidney cells. Through its production of cyclic ADP-ribose, CD38 modulates calcium-mediated signal transduction in many types of cells, including neutrophils and pancreatic beta cells.

**Sequence:** Amino acid sequence derived from human CD38 (P28907) (Val 43-Ile 300) was expressed with a 6 His tag at the C-terminus.

**Protein length:** The recombinant human consists of 264 amino acids and predicts a molecular mass of 31 kDa. It migrates as an approximately 42-45 kDa band in SDS-PAGE under reducing conditions due to glycosylation.

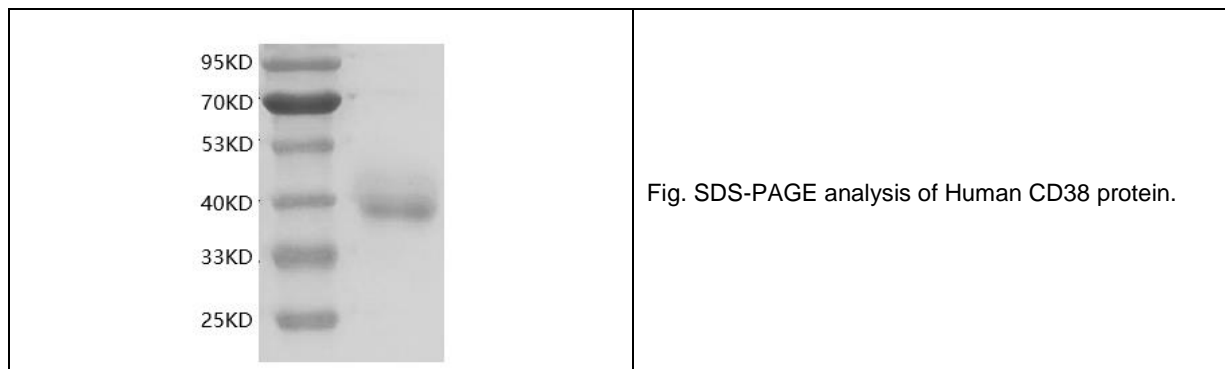
**Biological Activity:** Testing in progress.

**Endotoxin:** < 1.0 EU per µg of the protein as determined by the LAL method.

**Formulation:** Lyophilized from sterile PBS, pH 7.4.

**Storage Instructions:** Lyophilized Human CD38 protein product should be stored desiccated below -18°C. Upon reconstitution, the protein should be stored at 4°C between 2-7 days and for future use below -18°C. For long term storage it is recommended to add a carrier protein (0.1% HSA or BSA). Please prevent freeze-thaw cycles.

**Usage notes:** Always centrifuge tubes before opening. It is recommended to reconstitute the lyophilized Human CD38 protein in sterile ddH<sub>2</sub>O not less than 100 µg/ml, which can then be further diluted to other aqueous solutions.



**Note:** The product listed herein is for research use only and is not intended for use in human or clinical diagnosis. Suggested applications of our products are not recommendations to use our products in violation of any patent or as a license. We cannot be responsible for patent infringements or other violations that may occur with the use of this product.