


## Human GM-CSF protein (Animal-Free)

Cat #: PRP2016

Size: 5 µg/20 µg/100 µg

### Product Information

	<b>Product Name:</b> Human GM-CSF protein (Animal-Free)		
<b>REF</b>	<b>Catalog Number:</b> PRP2016	<b>LOT</b>	<b>Lot Number:</b> Refer to product label
	<b>Purity:</b> >98% as determined by SDS-PAGE		
	<b>Storage:</b> Store at -20°C		<b>Preparation method:</b> HEK293 Cells
	<b>Shipping:</b> The product is shipped at ambient temperature.		

**Background:** Granulocyte-macrophage colony-stimulating factor (GM-CSF) is a cytokine that stimulates the growth and differentiation of hematopoietic precursor cells from various lineages, including granulocytes, macrophages, eosinophils and erythrocytes. GM-CSF is used therapeutically in myeloid reconstitution following bone marrow transplant, bone marrow transplant engraftment failure or delay, mobilization and following transplantation of autologous peripheral blood progenitor cells, and following induction chemotherapy in older adults with acute myelogenous leukemia (AML).

**Sequence:** Amino acid sequence derived from human GM-CSF (NP\_000749.2) (Met1-Glu144) was expressed with a 6His tag at the C-terminus.

**Protein length:** The recombinant human GM-CSF consists of 127 amino acids and predicts a molecular mass of 14.5 kDa. It migrates as an approximately 23.8 kDa band in SDS-PAGE under reducing conditions due to glycosylation.

**Endotoxin:** < 1.0 EU per µg of the protein as determined by the LAL method.

**Formulation:** Lyophilized from sterile PBS, pH 7.4.

**Storage Instructions:** Lyophilized Human GM-CSF protein product should be stored desiccated below -20°C. Upon reconstitution, the protein should be stored at 4°C between 2-7 days and for future use below -20°C. For long term storage it is recommended to add a carrier protein (0.1% HSA or BSA). Please prevent freeze-thaw cycles.

**Usage notes:** Always centrifuge tubes before opening. It is recommended to reconstitute the lyophilized Human GM-CSF protein using the buffer we provided not less than 100 µg/ml, which can then be further diluted to other aqueous solutions.

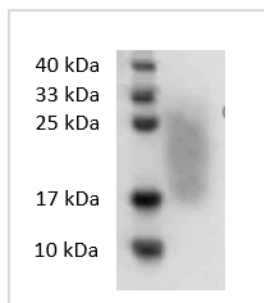


Fig. SDS-PAGE analysis of Human GM-CSF protein.

**Note:** The product listed herein is for research use only and is not intended for use in human or clinical diagnosis. Suggested applications of our products are not recommendations to use our products in violation of any patent or as a license. We cannot be responsible for patent infringements or other violations that may occur with the use of this product.