


## Mouse IL-15 Protein

Cat #: PRP1144

Size: 5ug/20ug/100ug/1mg

### Product Information

	<b>Product Name:</b> Mouse IL-15 Protein		
<b>REF</b>	<b>Catalog Number:</b> PRP1144	<b>LOT</b>	<b>Lot Number:</b> Refer to product label
	<b>Purity:</b> > 98% as determined by SDS-PAGE		
	<b>Storage:</b> Store at -20°C		<b>Preparation method:</b> E.coli
	<b>Shipping:</b> The product is shipped at ambient temperature.		

**Background:** IL-15 was discovered in the supernatant of Simian kidney epithelial cell line CV-1/EBNA, as a soluble factor capable of supporting proliferation of the IL-2-dependent cell line, CTLL-2. IL-15 is a regulatory cytokine, and it is produced by dendritic cells, epithelial cells, fibroblasts, and monocytes. IL-15 plays an important role in immune response and shares many functions with IL-2. For example, it stimulates the proliferation of activated T cells, NK cells, and B cells, and induces immunoglobulin synthesis by B cells stimulated by anti-IgM or CD40 ligand. In addition, IL-15 promotes the development of dendritic cells and induces the production of proinflammatory cytokines from macrophages. IL-15 acts as a bridge between innate and adaptive immunity because of its diverse roles in the immune system.

**Sequence:** Amino acid sequence derived from Mouse IL-15 Protein (P48346) (Asn49Ser162) was expressed with 6×His tag at the N-terminus.

**Protein length:** The protein has a calculated MW of 14.2 kDa. The protein migrates as 17 kDa under reducing condition (SDS-PAGE analysis).

**Biological Activity:** Measure by its ability to induce CTLL-2 cells proliferation. The ED<sub>50</sub> for this effect is <10 ng/mL. The specific activity of recombinant mouse IL-15 is approximately >1x 10<sup>5</sup> IU/mg.

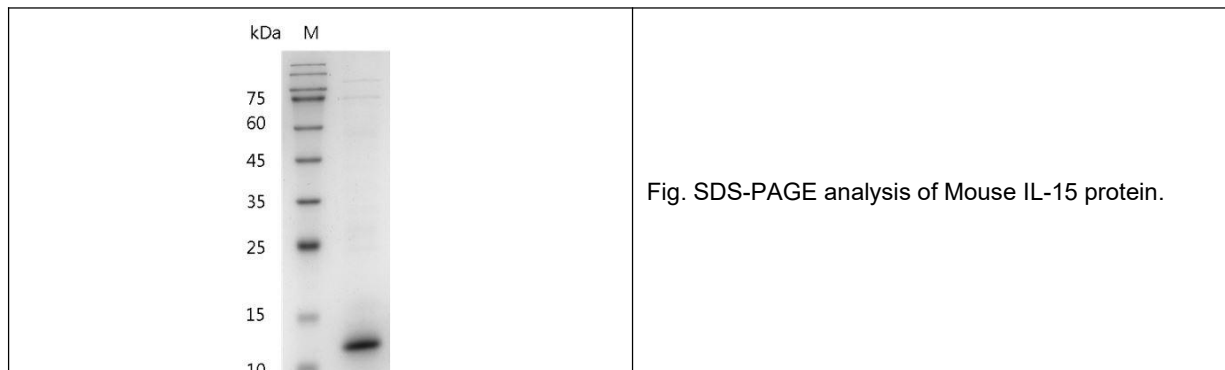
**Endotoxin:** <0.1 EU per 1 µg of the protein by the LAL method.

**Formulation:** The protein was lyophilized from a 0.2 µm filtered solution containing PBS, pH 7.4.

**Storage Instructions:** Lyophilized protein product should be stored desiccated below -18°C. Upon reconstitution, the protein should be stored at 4°C between 2-7 days and for future use below -18°C. For long term storage it is recommended to add a

carrier protein (5% HSA , 10%FBS or 0.1%BSA). Please prevent freeze-thaw cycles.

**Usage notes:** Always centrifuge tubes before opening. It is recommended to reconstitute the lyophilized recombinant Mouse IL-15 Protein to a concentration of 0.1-1 mg/mL in sterile ddH<sub>2</sub>O, and keep at room temperature for at least 20 min to fully dissolve. Please avoid vortex vigorously



**Note:** The product listed herein is for research use only and is not intended for use in human or clinical diagnosis. Suggested applications of our products are not recommendations to use our products in violation of any patent or as a license. We cannot be responsible for patent infringements or other violations that may occur with the use of this product.