


## Mouse EGF protein

Cat #: PRP1142

Size: 100ug/500ug/1mg/10mg

### Product Information

	<b>Product Name:</b> Mouse EGF protein		
<b>REF</b>	<b>Catalog Number:</b> PRP1142	<b>LOT</b>	<b>Lot Number:</b> Refer to product label
	<b>Purity:</b> >98% as determined by SDS-PAGE		
	<b>Storage:</b> Store at -20°C		<b>Preparation method:</b> E.coli
	<b>Shipping:</b> The product is shipped at ambient temperature.		

**Background:** EGF stimulates the growth of various epidermal and epithelial tissues in vivo and in vitro and of some fibroblasts in cell culture. Magnesiotropic hormone that stimulates magnesium reabsorption in the renal distal convoluted tubule via engagement of EGFR and activation of the magnesium channel TRPM6. EGF can induce neurite outgrowth in motoneurons of the pond snail *Lymnaea stagnalis* in vitro.

**Sequence:** Amino acid sequence derived from Mouse EGF (P01132) (Met978-Arg 1029) was expressed with 6×His tag at the C-terminus.

**Protein length:** The protein has a calculated MW of 6.98 kDa. The protein migrates as 8 kDa under reducing condition (SDS-PAGE analysis).

**Biological Activity:** Measure by its ability to induce 3T3 cells proliferation. The ED<sub>50</sub> for this effect is <80 pg/mL. The specific activity of recombinant mouse EGF is approximately >1x10<sup>7</sup> IU/mg.

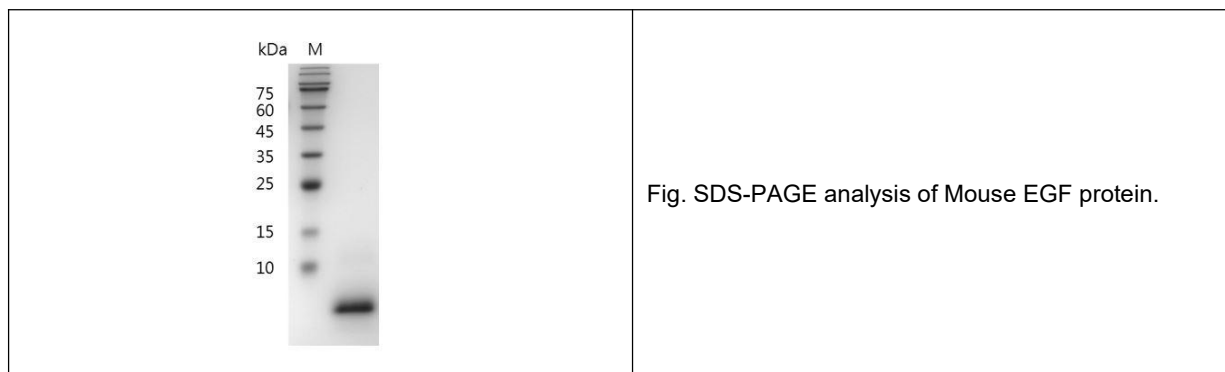
**Endotoxin:** <0.1 EU per 1 µg of the protein by the LAL method.

**Formulation:** The protein was lyophilized from a 0.2 µm filtered solution containing PBS, pH 8.0. If you have any concerns or special requirements, please confirm with us.

**Storage Instructions:** Lyophilized protein product should be stored desiccated below -18°C. Upon reconstitution, the protein should be stored at 4°C between 2-7 days and for future use below -18°C. For long term storage it is recommended to add a carrier protein (5% HSA, 10% FBS or 0.1% BSA). Please prevent freeze-thaw cycles.

**Usage notes:** Always centrifuge tubes before opening. It is recommended to reconstitute the lyophilized recombinant Mouse

EGF protein to a concentration of 0.1-1 mg/mL in sterile ddH<sub>2</sub>O, and keep at room temperature for at least 20 min to fully dissolve. Please avoid vortex vigorously



**Note:** The product listed herein is for research use only and is not intended for use in human or clinical diagnosis. Suggested applications of our products are not recommendations to use our products in violation of any patent or as a license. We cannot be responsible for patent infringements or other violations that may occur with the use of this product.