


## Human NT-3 Protein

Cat #:PRP1044

Size: 10 µg/50 µg/500 µg

### Product Information

	<b>Product Name:</b> Human NT-3 Protein		
<b>REF</b>	<b>Catalog Number:</b> PRP1044	<b>LOT</b>	<b>Lot Number:</b> Refer to product label
	<b>Purity:</b> > 96% as determined by SDS-PAGE		
	<b>Storage:</b> Store at -20°C		<b>Preparation method:</b> <i>E. coli</i>
	<b>Shipping:</b> The product is shipped at ambient temperature.		

**Background:** Human Neurotrophin-3 (NT-3) is a member of the neurotrophin family, that controls the survival and differentiation of mammalian neurons. This protein is closely related to both nerve growth factor and brain-derived neurotrophic factor. NT-3 is a key mediator of neuronal development during the early neurogenic period. NT-3 is a novel target gene of POU3F2 and that the POU3F2/NT-3 pathway plays a role in the process of neuronal differentiation. NT-3 is capable of activating TrkB to induce anoikis resistance, and show that NT-3 is also a direct target of miR-200c. NT-3 is broadly expressed in the ovary, spleen, and other tissues. Diseases associated with NT-3 include Hypochondriasis and Demyelinating Disease.

**Sequence :** Amino acid sequence derived from the processed form of Human NT-3 (P20783-1) (Tyr139-Thr257) was expressed and purified

**Protein length:** The recombinant Human NT-3 consists of 119 amino acids with 6 ×His tag at N- terminus and has a predicted molecular mass of 16 kDa.

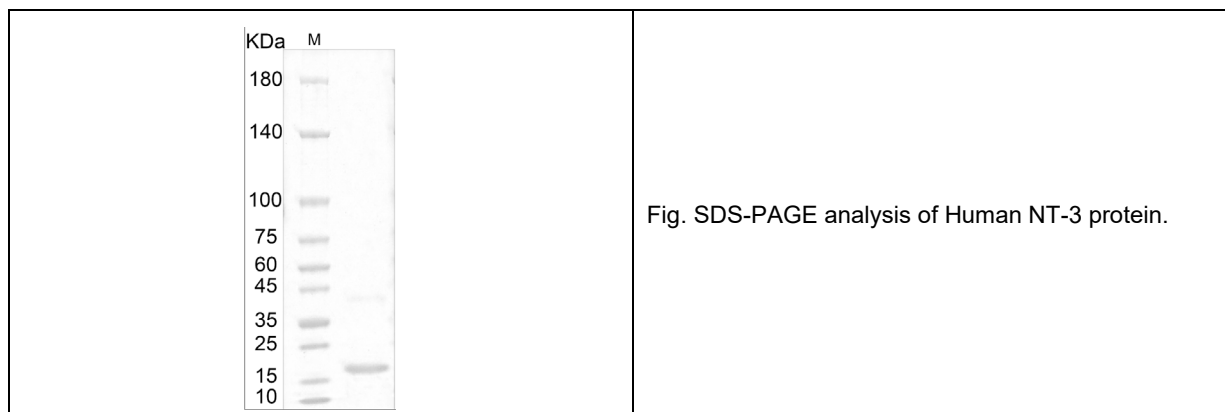
**Biological Activity:** Measured by its binding ability in a functional ELISA. Immobilized human NT3 at 1 µg/mL(100 µL/well) can bind human TrkB-Fch. The EC50 of human TrkB-Fch is 26.38 ug/mL.

**Endotoxin:** <0.1 EU per µg of the protein as determined by the LAL method.

**Formulation:** Liquid in sterile 20 mM Tris ,10% Glycerol, pH 8.0.

**Storage Instructions:** Human NT-3 protein product should be stored desiccated below -20°C. The protein should be stored at 4°C between 2-7 days. For long term storage it is recommended to add a carrier protein (0.1% HSA or BSA ). Please prevent freeze-thaw cycles.

**Usage notes:** Always centrifuge tubes before opening. It is recommended to dilute the protein using the PBS buffer or Protein storage solution to working concentration.



**Note:** The product listed herein is for research use only and is not intended for use in human or clinical diagnosis. Suggested applications of our products are not recommendations to use our products in violation of any patent or as a license. We cannot be responsible for patent infringements or other violations that may occur with the use of this product.