


## Human IL36 alpha protein

Cat #: PRP1027

Size: 10 µg/50 µg/100 µg/1 mg

### Product Information

	<b>Product Name:</b> Human IL36 alpha protein		
<b>REF</b>	<b>Catalog Number:</b> PRP1027	<b>LOT</b>	<b>Lot Number:</b> Refer to product label
	<b>Purity:</b> >98% as determined by SDS-PAGE		
	<b>Storage:</b> Store at -20°C		<b>Preparation method:</b> <i>E.Coli</i>
	<b>Shipping:</b> The product is shipped at ambient temperature.		

**Background:** Human IL36 alpha previously called IL-1F6 and FIL1 epsilon (family of IL-1 member epsilon), is a member of the IL-1 family which includes IL-1b, IL-1a, IL-1ra, IL-18, IL-36ra (IL1F5), IL-36b (IL1F8), IL-36g (IL1F9), IL-37 (IL1F7) and IL-38 (IL-1F10). IL36a is a pro-inflammatory cytokine which plays an important role in innate and adaptive immunity. IL36a is expressed in the immune system and the fetal brain, but not in other tissues or multiple hematopoietic cell lines. IL-36 alpha, beta, and gamma all activate NF-kappa B and MAPK pathways in an IL-1 Rrp2 dependent manner, and induce production of inflammatory cytokines and chemokines such as CXCL8/IL-8. IL-36 alpha and other family members are overexpressed in psoriatic skin lesions, and transgenic overexpression of IL-36 alpha in skin keratinocytes produces epidermal hyperplasia.

**Sequence:** Amino acid sequence derived from Human IL36 alpha (Q9UHA7) (Lys6-Phe158) was expressed.

**Protein length:** The recombinant Human IL36 alpha consists of 153 amino acids and has a predicted molecular mass of 17 kD.

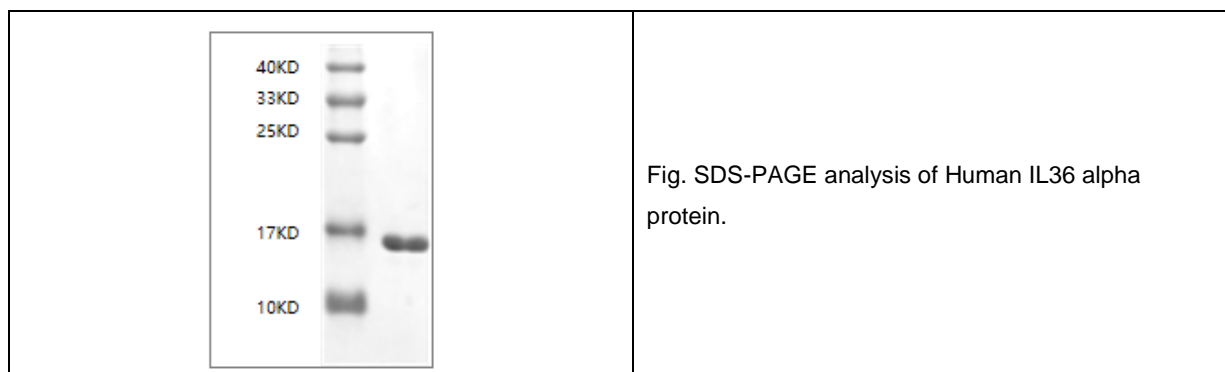
**Endotoxin:** < 0.1 EU per µg of the protein as determined by the LAL method.

**Formulation:** Lyophilized from sterile PBS, pH 7.4.

**Storage Instructions:** Lyophilized Human IL36 alpha protein product should be stored desiccated below -18°C. Upon reconstitution, the protein should be stored at 4°C between 2-7 days and for future use below -18°C. For long term storage it is recommended to add a carrier protein (0.1% HSA or BSA). Please prevent freeze-thaw cycles.

**Usage notes:** Always centrifuge tubes before opening. It is recommended to reconstitute the lyophilized Human IL36 alpha

protein using the buffer we provided not less than 100 µg/ml, which can then be further diluted to other aqueous solutions.



**Note:** The product listed herein is for research use only and is not intended for use in human or clinical diagnosis. Suggested applications of our products are not recommendations to use our products in violation of any patent or as a license. We cannot be responsible for patent infringements or other violations that may occur with the use of this product.