


Human MCP2 protein, SUMO tag

Cat #: PRP1020

Size: 5 µg/20 µg/100 µg

Product Information

	Product Name: Human MCP2 protein, SUMO tag		
REF	Catalog Number: PRP1020	LOT	Lot Number: Refer to product label
	Purity: >95% as determined by SDS-PAGE		
	Storage: Store at -20°C		Preparation method: <i>E.Coli</i>
	Shipping: The product is shipped at below ambient temperature.		

Background: Chemokine ligand 8 (CCL8), also known as monocyte chemoattractant protein 2 (MCP-2), is a small cytokine belonging to the C-C chemokine family. CCL8 functions to activate different immune cells, including mast cells, eosinophils and basophils which are involved in allergic responses, monocytes, and T cells and NK cells which are involved in the inflammatory response. CCL8's ability achieves by binding to different cell surface receptors termed chemokine receptors including CCR1, CCR2B and CCR5. It has been reported that CCL8 is a potent inhibitor of HIV-1 by virtue of its binding to CCR5 which is one of the major co-receptors for HIV-1.

Sequence: Amino acid sequence derived from human MCP2 (Gln 24-Pro 99) was fused with the SUMO tag at the N-terminus .

Protein length: The recombinant human MCP2 consisting of 184 amino acids and has a calculated molecular mass of 20.3 kDa.

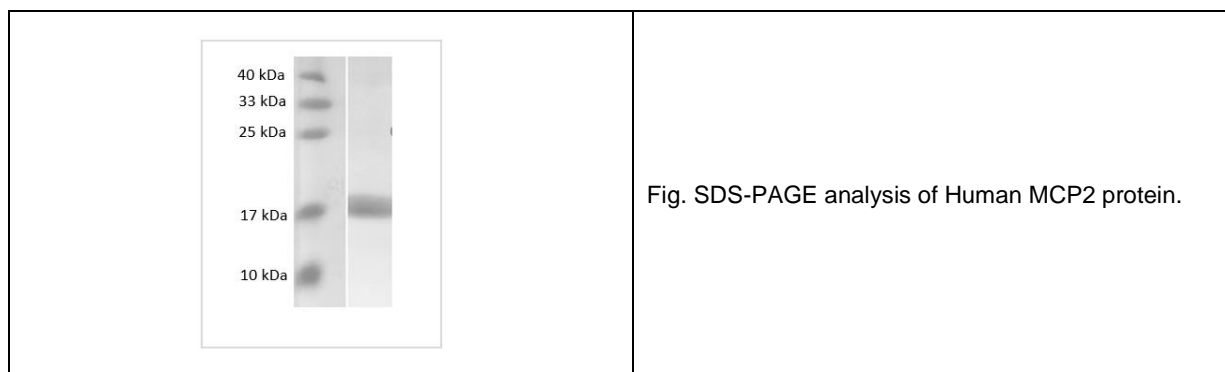
Endotoxin: < 1.0 EU per µg of the protein as determined by the LAL method.

Formulation: Lyophilized from sterile PBS, pH 7.4.

Storage Instructions: Lyophilized Human MCP2 protein product should be stored desiccated below -20°C. Upon reconstitution, the protein should be stored at 4°C between 2-7 days and for future use below -20°C. For long term storage it is recommended to add a carrier protein (0.1% HSA or BSA). Please prevent freeze-thaw cycles.

Usage notes: Always centrifuge tubes before opening. It is recommended to reconstitute the lyophilized Human MCP2

protein using the buffer we provided not less than 100 µg/ml, which can then be further diluted to other aqueous solutions.



Note: The product listed herein is for research use only and is not intended for use in human or clinical diagnosis. Suggested applications of our products are not recommendations to use our products in violation of any patent or as a license. We cannot be responsible for patent infringements or other violations that may occur with the use of this product.