


Human IL-1 beta protein

Cat #: PRP1019

Size: 5 µg/20 µg/100 µg/1 mg

Product Information

	Product Name: Human IL-1 beta protein		
REF	Catalog Number: PRP1019	LOT	Lot Number: Refer to product label
	Purity: >98 % as determined by SDS-PAGE		
	Storage: Store at -20°C		Preparation method: <i>E.Coli</i>
	Shipping: The product is shipped at ambient temperature.		

Background: Interleukin-1 beta (IL-1 beta or IL1B) also known as catabolin, is a member of the interleukin 1 cytokine family. IL-1 beta is produced by activated macrophages as a proprotein, which is proteolytically processed to its active form by caspase 1 (CASP1/ICE). IL-1 beta is an important mediator of the inflammatory response, and is involved in a variety of cellular activities, including cell proliferation, differentiation, and apoptosis. The induction of cyclooxygenase-2 (PTGS2/COX2) by Interleukin 1β in the central nervous system (CNS). IL-1 beta gene and eight other interleukin 1 family genes form a cytokine gene cluster on chromosome 2.

Sequence: Amino acid sequence derived from human IL-1 beta (NP_000567.1) (Ala 117-Ser 269) was expressed.

Protein length: The recombinant human IL-1 beta consists of 154 amino acids and has a predicted molecular mass of 17 kDa.

Endotoxin: < 0.01 EU per µg of the protein as determined by the LAL method.

Formulation: Lyophilized from sterile PBS, pH 7.4.

Storage Instructions: Lyophilized Human IL-1 beta protein product should be stored desiccated below -20°C. Upon reconstitution, the protein should be stored at 4°C between 2-7 days and for future use below -20°C. For long term storage it is recommended to add a carrier protein (0.1% HSA or BSA). Please prevent freeze-thaw cycles.

Usage notes: Always centrifuge tubes before opening. It is recommended to reconstitute the lyophilized Human IL-1 beta protein using the buffer we provided not less than 100 µg/ml, which can then be further diluted to other aqueous solutions.

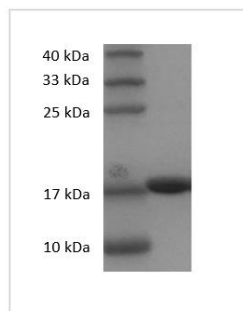


Fig. SDS-PAGE analysis of Human IL-1 beta protein.

Note: The product listed herein is for research use only and is not intended for use in human or clinical diagnosis. Suggested applications of our products are not recommendations to use our products in violation of any patent or as a license. We cannot be responsible for patent infringements or other violations that may occur with the use of this product.