


Human IL-6 protein

Cat #: PRP1012

Size: 5µg/20µg/100µg/1mg

Product Information

	Product Name: Human IL-6 protein		
REF	Catalog Number: PRP1012	LOT	Lot Number: Refer to product label
	Purity: > 98 % as determined by SDS-PAGE		
	Storage: Store at -20°C		Preparation method: <i>E. coli</i>
	Shipping: The product is shipped at ambient temperature.		

Background: Interleukin-6 (IL-6) is a multifunctional α -helical cytokine that regulates cell growth and differentiation of various tissues, which is known particularly for its role in the immune response and acute phase reactions. IL-6 protein is secreted by a variety of cell types including T cells and macrophages as phosphorylated and variably glycosylated molecule. It exerts actions through the its heterodimeric receptor composed of IL-6R that lacks the tyrosine/kinase domain and binds IL-6 with low affinity, and ubiquitously expressed glycoprotein 130 (gp130) that binds the IL-6. IL-6R complex with high affinity and thus transduces signals. IL-6 is also involved in hematopoiesis, bone metabolism, and cancer progression, and has been defined an essential role in directing transition from innate to acquired immunity.

Sequence: Amino acid sequence derived from mature form of human IL-6 (NP_000591.1) (Val 30-Met 212) was expressed, with an initial Met at the N-terminus.

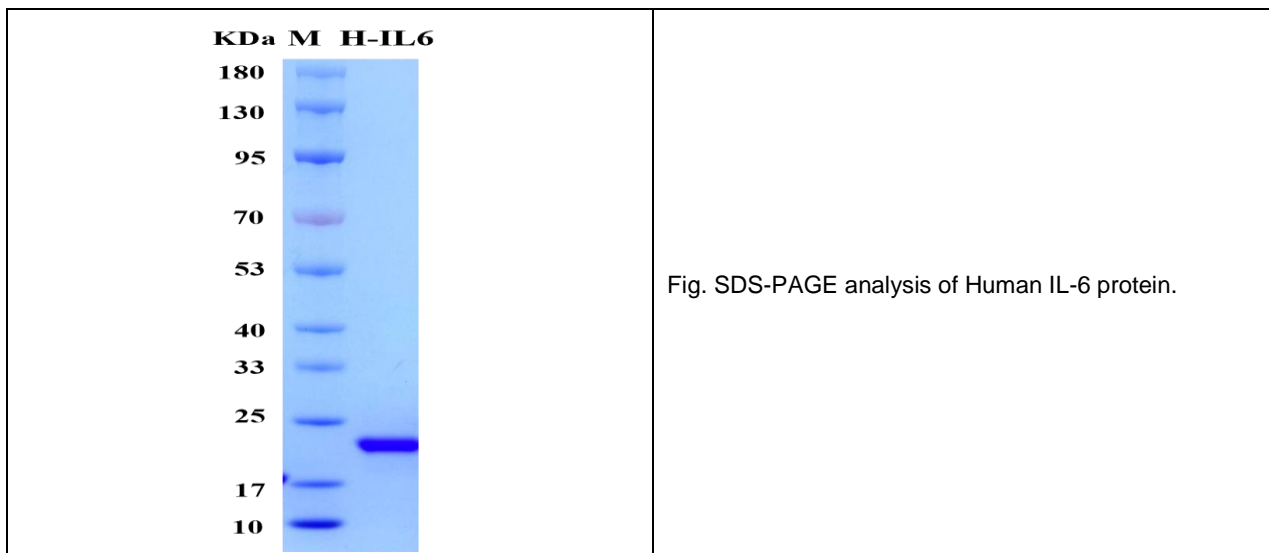
Protein length: The recombinant Human IL-6 consists of 187 amino acids and migrates with an apparent molecular mass of 20.6 kDa as estimated in SDS-PAGE under reducing conditions.

Endotoxin: <0.1 EU per µg of the protein by the LAL method.

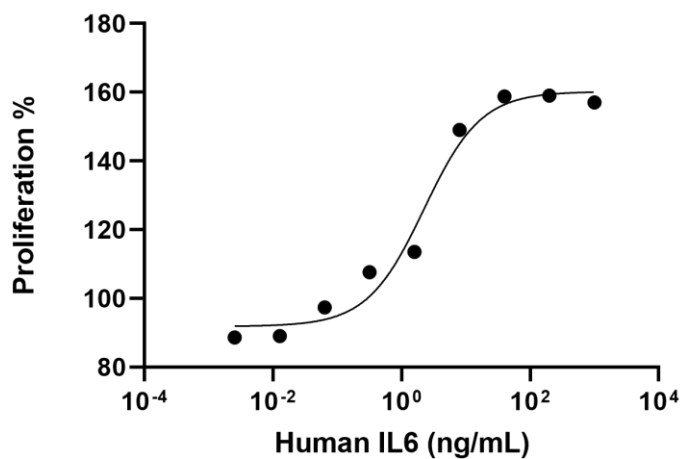
Formulation: Lyophilized from sterile 150 mM NaCl 20 mM Tris , pH 7.4.

Storage Instructions: Lyophilized Human IL6 protein product should be stored desiccated below -20°C. Upon reconstitution, the protein should be stored at 4°C between 2-7 days and for future use below -20°C. For long term storage it is recommended to add a carrier protein (0.1% HSA or BSA). Please prevent freeze-thaw cycles.

Usage notes: Always centrifuge tubes before opening. It is recommended to reconstitute the lyophilized Human IL-6 protein in sterile ddH₂O not less than 100µg/ml, which can then be further diluted to other aqueous solutions.



Biological Activity: Measured in a cell proliferation assay using TF -1. The ED₅₀ for this effect is typically 2.25 ng/mL. The specific activity of recombinant Human IL6 is approximately >4.44 x 10⁵ IU/mg.



Note: The product listed herein is for research use only and is not intended for use in human or clinical diagnosis. Suggested applications of our products are not recommendations to use our products in violation of any patent or as a license. We cannot be responsible for patent infringements or other violations that may occur with the use of this product.