


## Mouse M-CSF protein

Cat #: PRP100503

Size: 20µg/100µg/1mg

### Product Information

	<b>Product Name:</b> Mouse M-CSF protein		
<b>REF</b>	<b>Catalog Number:</b> PRP100503	<b>LOT</b>	<b>Lot Number:</b> Refer to product label
	<b>Purity:</b> > 95 % as determined by SDS-PAGE		
	<b>Storage:</b> Store at -20°C		<b>Preparation method:</b> Human Cells
	<b>Shipping:</b> The product is shipped at ambient temperature.		

**Background:** Macrophage colony-stimulating factor 1, also known as CSF-1, M-CSF, Lanimostim and CSF1, is a single-pass membrane protein which is disulfide-linked as a homodimer or heterodimer. Granulocyte / macrophage colony-stimulating factors are cytokines that act in hematopoiesis by controlling the production, differentiation, and function of 2 related white cell populations of the blood, the granulocytes and the monocytes-macrophages. M-CSF/CSF-1 is known to facilitate monocyte survival, monocyte-to-macrophage conversion, and macrophage proliferation. M-CSF/CSF-1 is a secreted cytokine which influences hemopoietic stem cells to differentiate into macrophages or other related cell types. It binds to the Colony stimulating factor 1 receptor. M-CSF/CSF-1 may also be involved in development of the placenta. The active form of M-CSF/CSF-1 is found extracellularly as a disulfide-linked homodimer, and is thought to be produced by proteolytic cleavage of membrane-bound precursors. M-CSF/CSF-1 induces cells of the monocyte/macrophage lineage. It also plays a role in immunological defenses, bone metabolism, lipoproteins clearance, fertility and pregnancy. Upregulation of M-CSF/CSF-1 in the infarcted myocardium may have an active role in healing not only through its effects on cells of monocyte/macrophage lineage, but also by regulating endothelial cell chemokine expression.

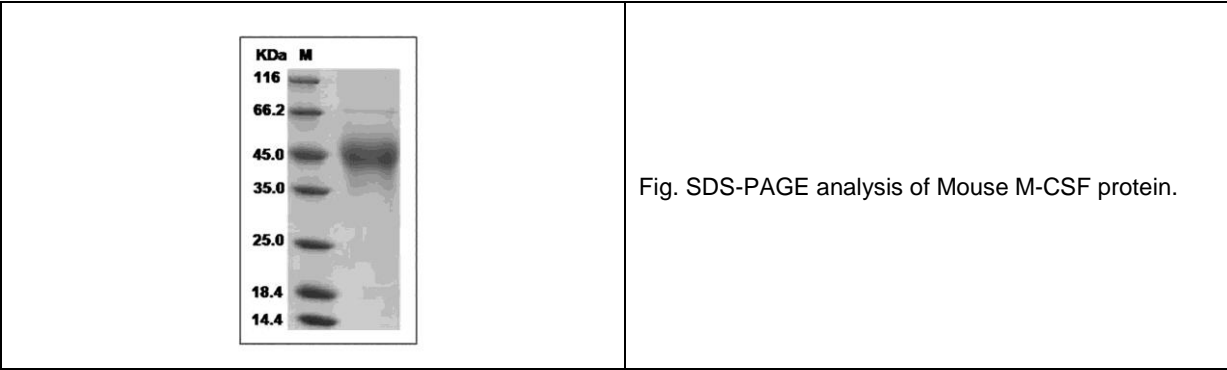
**Sequence:** Amino acid sequence derived from mouse CSF1 (P07141-1) (Met1-Glu262) was expressed.

**Protein length:** The recombinant mouse CSF1 comprises 230 amino acids and has a predicted molecular mass of 26 kDa. The apparent molecular mass of the protein is approximately 45 kDa in SDS-PAGE under reducing conditions due to glycosylation.

**Formulation:** Lyophilized from sterile PBS, pH 7.4.

**Storage Instructions:** Lyophilized Mouse M-CSF protein product should be stored desiccated below -18°C. Upon reconstitution, the protein should be stored at 4°C between 2-7 days and for future use below -18°C. For long term storage it is recommended to add a carrier protein (0.1% HSA or BSA). Please prevent freeze-thaw cycles.

**Usage notes:** Always centrifuge tubes before opening. It is recommended to reconstitute the lyophilized Mouse M-CSF protein in sterile ddH<sub>2</sub>O not less than 100µg/ml, which can then be further diluted to other aqueous solutions.



**Note:** The product listed herein is for research use only and is not intended for use in human or clinical diagnosis. Suggested applications of our products are not recommendations to use our products in violation of any patent or as a license. We cannot be responsible for patent infringements or other violations that may occur with the use of this product.