


Human IL-22 protein

Cat #: PRP100308

Size: 20µg/100µg/1mg

Product Information

	Product Name: Human IL-22 protein		
REF	Catalog Number: PRP100308	LOT	Lot Number: Refer to product label
	Purity: > 95 % as determined by SDS-PAGE		
	Storage: Store at -20°C		Preparation method: E. coli
	Shipping: The product is shipped at ambient temperature.		

Background: IL22 is a member of a group of cytokines called the IL-10 family or IL-10 superfamily (including IL-19, IL-20, IL-24, and IL-26), a class of potent mediators of cellular inflammatory responses. It shares use of IL-10R2 in cell signaling with other members of this family, IL-10, IL-26, IL-28A/B and IL-29. IL22 is produced by activated DC and T cells and initiates innate immune responses against bacterial pathogens especially in epithelial cells such as respiratory and gut epithelial cells. IL22 along with IL-17 is rapidly produced by splenic LTI-like cells and can be also produced by Th17 cells and likely plays a role in the coordinated response of both adaptive and innate immune systems. IL22 biological activity is initiated by binding to a cell-surface complex composed of IL-22R1 and IL-10R2 receptor chains and further regulated by interactions with a soluble binding protein, IL-22BP, which shares sequence similarity with an extracellular region of IL-22R1 (sIL-22R1). IL22 and IL-10 receptor chains play a role in cellular targeting and signal transduction to selectively initiate and regulate immune responses. IL22 can contribute to immune disease through the stimulation of inflammatory responses, S100s and defensins. IL22 also promotes hepatocyte survival in the liver and epithelial cells in the lung and gut similar to IL-10. In some contexts, the pro-inflammatory versus tissue-protective functions of IL22 are regulated by the often co-expressed cytokine IL-17A.

Sequence: Amino acid sequence derived from human IL22(NP_065386.1) (Ala34-Ile179) was expressed with a N-terminal Met.

Protein length: The recombinant human IL22 consists of 147 amino acids and predicts a molecular mass of 16.9 KDa. It migrates as an approximately 15 KDa band in SDS-PAGE under reducing conditions.

Formulation: Lyophilized from sterile PBS, pH 8.0.

Storage Instructions: Lyophilized Human IL22 protein product should be stored desiccated below -18°C. Upon reconstitution, the protein should be stored at 4°C between 2-7 days and for future use below -18°C. For long term storage it is recommended to add a carrier protein (0.1% HSA or BSA). Please prevent freeze-thaw cycles.

Usage notes: Always centrifuge tubes before opening. It is recommended to reconstitute the lyophilized Human IL22 protein in sterile ddH₂O not less than 100µg/ml, which can then be further diluted to other aqueous solutions.

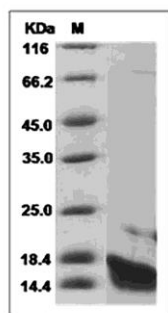


Fig. SDS-PAGE analysis of Human IL-22 protein.

Note: The product listed herein is for research use only and is not intended for use in human or clinical diagnosis. Suggested applications of our products are not recommendations to use our products in violation of any patent or as a license. We cannot be responsible for patent infringements or other violations that may occur with the use of this product.