


Human CXCL10 protein

Cat #: PRP100185

Size: 20µg/100µg/1mg

Product Information

	Product Name: Human CXCL10 protein		
REF	Catalog Number: PRP100185	LOT	Lot Number: Refer to product label
	Purity: > 90 % as determined by SDS-PAGE		
	Storage: Store at -20°C		Preparation method: E. coli
	Shipping: The product is shipped at ambient temperature.		

Background: CXCL10, also known as crg-2, is a chemokine of the CXC subfamily and ligand for the receptor CXCR3. CXC chemokines are particularly significant for leukocyte infiltration in inflammatory diseases. CXCL10 has a three-dimensional crystal structure. Its signaling is mediated by the G protein-coupled receptor CXCR3, which is expressed on activated T cells and plays an important role in directing the migration of T cells, especially during Th1 responses. Binding of CXCL10 to CXCR3 results in pleiotropic effects, including stimulation of monocytes, natural killer and T-cell migration, and modulation of adhesion molecule expression. It is chemotactic for monocytes and T-lymphocytes. CXCL10 can be secreted by several cell types in response to IFN-γ. Baseline pre-treatment plasma levels of CXCL10 are elevated in patients chronically infected with hepatitis C virus (HCV) of genotypes 1 or 4 who do not achieve a sustained viral response (SVR) after completion of antiviral therapy.

Sequence: Amino acid sequence derived from mature form of human CXCL10 (Q9UBH0) (Val22-Pro98) was expressed, with a N-terminal Met.

Protein length: The recombinant human CXCL10 consists of 78 amino acids and predicts a molecular mass of 8.8 KDa. It migrates as an approximately 9 KDa band in SDS-PAGE under reducing conditions.

Formulation: Lyophilized from sterile PBS.

Storage Instructions: Lyophilized Human CXCL10 protein product should be stored desiccated below -18°C. Upon reconstitution, the protein should be stored at 4°C between 2-7 days and for future use below -18°C. For long term storage it is recommended to add a carrier protein (0.1% HSA or BSA). Please prevent freeze-thaw cycles.

Usage notes: Always centrifuge tubes before opening. It is recommended to reconstitute the lyophilized Human CXCL10 protein in sterile ddH₂O not less than 100µg/ml, which can then be further diluted to other aqueous solutions.

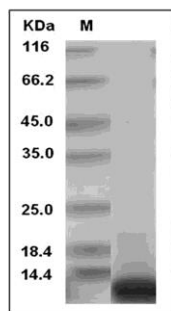


Fig. SDS-PAGE analysis of Human CXCL10 protein.

Note: The product listed herein is for research use only and is not intended for use in human or clinical diagnosis. Suggested applications of our products are not recommendations to use our products in violation of any patent or as a license. We cannot be responsible for patent infringements or other violations that may occur with the use of this product.