


## Human Sclerostin protein, His Tag

Cat #: PRP100151

Size: 50µg

### Product Information

	<b>Product Name:</b> Human Sclerostin protein, His Tag		
<b>REF</b>	<b>Catalog Number:</b> PRP100151	<b>LOT</b>	<b>Lot Number:</b> Refer to product label
	<b>Purity:</b> > 90 % as determined by SDS-PAGE		
	<b>Storage:</b> Store at -20°C		<b>Preparation method:</b> Human Cells
	<b>Shipping:</b> The product is shipped at ambient temperature.		

**Background:** Sclerostin, the protein product of the SOST gene, is a potent inhibitor of bone formation. Sclerostin protein is widely expressed at low levels with highest levels in bone, cartilage, kidney, liver, bone marrow and primary osteoblasts differentiated for 21 days, and was originally identified as an important regulator of bone remodeling, homeostasis, and links bone resorption and bone apposition. Recent studies have revealed that Sclerostin protein inhibits the bone growth probably by binding to the extracellular domain of the Wnt coreceptors LRP5 and LRP6 and disrupting Wnt-induced Frizzled-LRP complex formation.

**Sequence:** Amino acid sequence derived from mature form of human SOST (NP\_079513.1) (Gln 24-Tyr 213) was fused with a polyhistidine tag at the N-terminus.

**Protein length:** The recombinant human SOST is a monomeric protein consisting of 197 amino acids and predicts a molecular mass of 22.5 kDa. As a result of glycosylation, the apparent molecular mass of rhSOST is approximately 28 kDa in SDS-PAGE under reducing conditions..

**Formulation:** Lyophilized from sterile PBS, pH 7.2.

**Storage Instructions:** Lyophilized Human Sclerostin protein, His Tag product should be stored desiccated below -18°C. Upon reconstitution, the protein should be stored at 4°C between 2-7 days and for future use below -18°C. For long term storage it is recommended to add a carrier protein (0.1% HSA or BSA). Please prevent freeze-thaw cycles.

**Usage notes:** Always centrifuge tubes before opening. It is recommended to reconstitute the lyophilized Human Sclerostin protein, His Tag in sterile ddH<sub>2</sub>O not less than 100µg/ml, which can then be further diluted to other aqueous solutions.

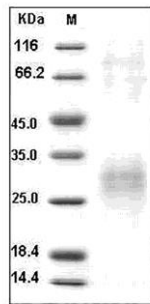


Fig. SDS-PAGE analysis of Human Sclerostin protein, His Tag.

**Note:** The product listed herein is for research use only and is not intended for use in human or clinical diagnosis. Suggested applications of our products are not recommendations to use our products in violation of any patent or as a license. We cannot be responsible for patent infringements or other violations that may occur with the use of this product.