


## Human IL-1 $\beta$ protein (pro form), His Tag

Cat #: PRP100050

Size: 100 $\mu$ g/1mg

### Product Information

	<b>Product Name:</b> Human IL-1 $\beta$ protein (pro form), His Tag		
<b>REF</b>	<b>Catalog Number:</b> PRP100050	<b>LOT</b>	<b>Lot Number:</b> Refer to product label
	<b>Purity:</b> > 95 % as determined by SDS-PAGE		
	<b>Storage:</b> Store at -20°C		<b>Preparation method:</b> E. coli
	<b>Shipping:</b> The product is shipped at ambient temperature.		

**Background:** Interleukin-1 beta (IL1 beta or IL1B) also known as catabolin, is a member of the interleukin 1 cytokine family. IL1 is a pleiotropic cytokine. It is involved in the inflammatory response, cell growth, and tissue repair in the cortex. The IL1 superfamily consists of three members, IL1A (IL1 alpha), IL1B (IL1 beta), and IL1 receptor antagonist (IL1Ra). In clinical, it has been reported that Interleukin (IL)-1 may influence Th1 / Th2 immune responsiveness and has been implicated in the establishment of successful pregnancy. Proinflammatory interleukin (IL)-1 gene polymorphisms associated with high levels of IL-1beta activity increase the risk for hypochlorhydria and distal gastric carcinoma. IL1B polymorphisms may be involved in susceptibility to SSc. Moreover, the IL2-384-G allele may be a marker for the limited phenotype of systemic sclerosis (SSc).

**Sequence:** Amino acid sequence derived from pro form of human IL1 $\beta$  (NP\_000567.1) (Met 1-Ser 269) was fused with a polyhistidine tag at the N-terminus.

**Protein length:** The recombinant pro form of human IL1 $\beta$  consisting of 280 amino acids and has a calculated molecular mass of 32.3 kDa. It migrates as an approximately 34 kDa band in SDS-PAGE under reducing conditions.

**Formulation:** Lyophilized from sterile PBS, pH 7.4.

**Storage Instructions:** Lyophilized Human IL-1 $\beta$  protein (pro form), His Tag product should be stored desiccated below -18°C. Upon reconstitution, the protein should be stored at 4°C between 2-7 days and for future use below -18°C. For long term storage it is recommended to add a carrier protein (0.1% HSA or BSA). Please prevent freeze-thaw cycles.

**Usage notes:** Always centrifuge tubes before opening. It is recommended to reconstitute the lyophilized Human IL-1 $\beta$  protein (pro form), His Tag in sterile ddH<sub>2</sub>O not less than 100 $\mu$ g/ml, which can then be further diluted to other aqueous solutions.

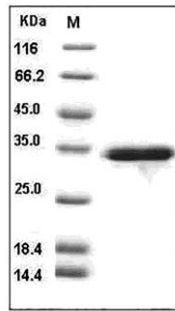


Fig. SDS-PAGE analysis of Human IL-1 $\beta$  protein (pro form), His Tag.

**Note:** The product listed herein is for research use only and is not intended for use in human or clinical diagnosis. Suggested applications of our products are not recommendations to use our products in violation of any patent or as a license. We cannot be responsible for patent infringements or other violations that may occur with the use of this product.