




SuperKine™ Enhanced Antibody Dilution Buffer

Cat #: BMU103-EN

Size: 100 mL/500 mL

	Product Name: SuperKine™ Enhanced Antibody Dilution Buffer		
REF	Catalog Number: BMU103-EN	LOT	Lot Number: Refer to product label
	Formulation: Liquid, ready to use		Applications: WB, IF, ICC, IHC, ELISA
	Storage: store at 4°C, stable for 12 months from date of shipment		Note: No

Applications

Application principle: SuperKine™ Enhanced Antibody Dilution Buffer is a ready-to-use universal antibody dilution, suitable for WB, IF, ICC, IHC, ELISA and other immunological experiments. By adding technical immune signal enhancement components and uniquely developed immune blocking and stabilizing components, this antibody dilution buffer can be used for various primary or secondary antibodies to enhance the signal intensity of immunological experiments and reduce the reaction background, which can achieve good experimental results. This product does not contain protein, phosphate, sodium azide or thimerosal preservatives, and is suitable for most types of antibodies dilution.

Advantages	Mechanism	Application
High sensitivity	Add unique immune signal enhancement components	Easier to obtain detection signals, better detection of low-abundance proteins
Reduce background	Add uniquely developed immune blocking components	Eliminate more interference and obtain more specific detection signal of target protein
High stability	Contains optimized antibody stabilization components	Increase the storage time of the diluted antibody, and can be used repeatedly
Wide applications	Wildly used reagents	Can be used in WB, IF, ELISA and other immune experiments, as well as a variety of antibodies

Application suggestion:

1. Refer to the instructions of the antibody to be diluted, use this product to dilute the primary or secondary antibody in an appropriate ratio directly according to the dilution recommendation of the actual immunological experiment.
2. The diluted antibody should be stored at 4°C immediately after the antibody incubation, in order to be used repeatedly.

Highlight moment: There are many methods to improve the signal of immunological experiments except for enhanced Antibody Dilution Buffer, such as using SuperKine™ Enhanced Antibody Dilution Buffer (BMU103-EN) in WB experiment, choosing DyLight, IFKine™ specialized secondary antibodies in IF experiment, or adopting high-quality animal serum, these are all pretty good options. Scan the QR code on the right to view more Abbkine product information.



Experimental results display:

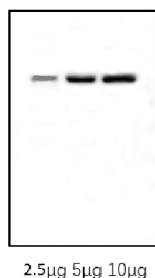


Fig. WB analysis of SuperKine™ Enhanced Antibody Dilution Buffer. Protein samples were 2.5 µg, 5 µg and 10 µg of HEK293 cell lysate from left to right in turn. Primary Antibody (NFKB p65 Monoclonal Antibody, ABM0017, 1:5000) and secondary Antibody (HRP, Goat Anti-Mouse IgG, A21010, 1:10000) were diluted with SuperKine™ Enhanced Antibody Dilution (BMU103-EN). The bands were incubated with SuperKine™ West Pico PLUS Chemiluminescent Substrate (BMU101-EN). The exposure time is 30s.

Precautions:

1. Do not mix components of different batch numbers and different manufacturers, otherwise it may cause abnormal results.
2. Try to incubate the antibody at 4°C, which can prolong the useful life of the antibody after dilution and is also convenient for repeated use.
3. If non-specific bands interfere with the experiment, you can try to appropriately reduce the amount of protein loaded, reduce the concentration of the primary antibody and the secondary antibody, or shorten the exposure time.
4. The products have passed strict quality inspections. Welcome to contact us at any time, we are committed to customer success and customer satisfaction.

References:

[1] Jones A R. Dextran as a Diluent for Univalent Antibodies[J]. Nature, 1950, 165(4186):118-119

FAQ:

1. How long can the antibody diluted at 4°C be preserved?
A: The antibody in the diluted configuration of this product can be stably stored at 4°C for 1 month. It is recommended to use it up as soon as possible. If precipitation or bacterial contamination is found, please discard it.
2. Do you have any suggestions on how to use it?
A: Compared with conventional antibody diluent, the enhanced antibody diluent has the effect of enhancing signal under the same protein loading amount, antibody dosage and exposure time. Therefore, it is suggested that the amount of above can be appropriately reduced during the use process, so as to obtain better signal results.
3. Does the diluent have the function of preventing antibody corruption?
A: This product contains an appropriate amount of antibody stabilizer, but does not contain preservatives. Currently, it does not have the function of anti-corrosion of antibodies. Attention should be paid to prevent the introduction of microorganisms in the process of use.

Recommended Products:

Catalog No.	Product Name	Recommended Reason
BMU101-EN	SuperKine™ West Pico PLUS Chemiluminescent Substrate	Sensitive, efficient, stable signal
BMU102-EN	SuperKine™ West Femto Maximum Sensitivity Substrate	Sensitive, efficient, stable signal

Disclaimer: The reagent is only used in the field of scientific research, not suitable for clinical diagnosis or other purposes.