



Ob Polyclonal Antibody

Cat #: ABP59635

Size: 30µl /100µl /200µl

Product Information

	Product Name: Ob Polyclonal Antibody		
	Applications: IHC-P, ELISA		Isotype: Rabbit IgG
	Reactivity: Human, Mouse, Rat		
REF	Catalog Number: ABP59635	LOT	Lot Number: Refer to product label
	Formulation: Liquid		Concentration: 1 mg/ml
	Storage: Store at -20°C. Avoid repeated freeze / thaw cycles.		Note: Contain sodium azide.

Background: LEP encodes a protein that is secreted by white adipocytes into the circulation and plays a major role in the regulation of energy homeostasis. Circulating leptin binds to the leptin receptor in the brain, which activates downstream signaling pathways that inhibit feeding and promote energy expenditure. This protein also has several endocrine functions, and is involved in the regulation of immune and inflammatory responses, hematopoiesis, angiogenesis, reproduction, bone formation and wound healing. Mutations in LEP and its regulatory regions cause severe obesity and morbid obesity with hypogonadism in human patients. A mutation in LEP has also been linked to type 2 diabetes mellitus development. LEP (Leptin) is a Protein Coding gene. Diseases associated with LEP include Obesity, Morbid, Due To Leptin Deficiency and Obesity Due To Congenital Leptin Deficiency. Among its related pathways are Common Cytokine Receptor Gamma-Chain Family Signaling Pathways and Transcription factor regulation in adipogenesis.

Application Notes: Optimal working dilutions should be determined experimentally by the investigator. Suggested starting dilutions are as follows: IHC-P (1:50-1:200), ELISA (1:10000-1:20000).

Storage Buffer: PBS, pH 7.4, containing 0.02% Sodium Azide as preservative and 50% Glycerol as stabilizer.

Storage Instructions: Stable for one year at -20°C from date of shipment. For maximum recovery of product, centrifuge the original vial after thawing and prior to removing the cap. Aliquot to avoid repeated freezing and thawing.

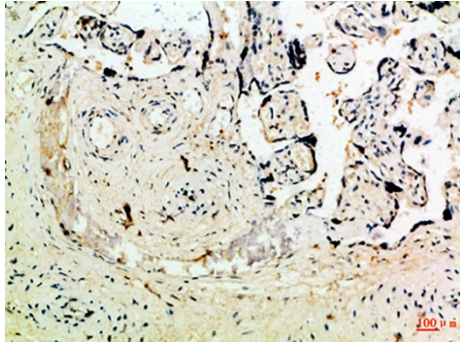


Fig.1. Immunohistochemical analysis of paraffin-embedded Human-placenta, antibody was diluted at 1:100.

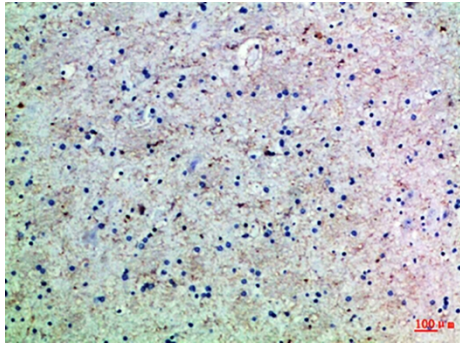


Fig.2. Immunohistochemical analysis of paraffin-embedded Human-brain, antibody was diluted at 1:100.

Note: The product listed herein is for research use only and is not intended for use in human or clinical diagnosis. Suggested applications of our products are not recommendations to use our products in violation of any patent or as a license. We cannot be responsible for patent infringements or other violations that may occur with the use of this product.