



## CD314 Polyclonal Antibody

Cat #: ABP58064

Size: 30µl /100µl /200µl

### Product Information

|                                                                                   |                                                                      |                                                                                   |                                           |
|-----------------------------------------------------------------------------------|----------------------------------------------------------------------|-----------------------------------------------------------------------------------|-------------------------------------------|
|                                                                                   | <b>Product Name:</b> CD314 Polyclonal Antibody                       |                                                                                   |                                           |
|                                                                                   | <b>Applications:</b> IHC-P, ELISA                                    |                                                                                   | <b>Isotype:</b> Rabbit IgG                |
|                                                                                   | <b>Reactivity:</b> Human                                             |                                                                                   |                                           |
| <b>REF</b>                                                                        | <b>Catalog Number:</b> ABP58064                                      | <b>LOT</b>                                                                        | <b>Lot Number:</b> Refer to product label |
|                                                                                   | <b>Formulation:</b> Liquid                                           |                                                                                   | <b>Concentration:</b> 1 mg/ml             |
|  | <b>Storage:</b> Store at -20°C. Avoid repeated freeze / thaw cycles. |  | <b>Note:</b> Contain sodium azide.        |

**Background:** KLRK1 (Killer Cell Lectin Like Receptor K1) is a Protein Coding gene. Diseases associated with KLRK1 include Congenital Cytomegalovirus and Large Granular Lymphocyte Leukemia. Among its related pathways are Immune response Role of DAP12 receptors in NK cells and Class I MHC mediated antigen processing and presentation.

**Application Notes:** Optimal working dilutions should be determined experimentally by the investigator. Suggested starting dilutions are as follows: IHC-P (1:50-1:200), ELISA (1:10000-1:20000).

**Storage Buffer:** PBS, pH 7.4, containing 0.02% Sodium Azide as preservative and 50% Glycerol as stabilizer.

**Storage Instructions:** Stable for one year at -20°C from date of shipment. For maximum recovery of product, centrifuge the original vial after thawing and prior to removing the cap. Aliquot to avoid repeated freezing and thawing.

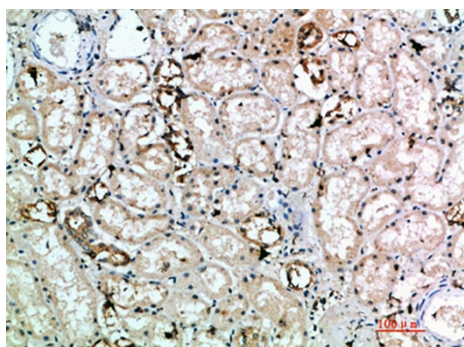


Fig.1. Immunohistochemical analysis of paraffin-embedded human-kidney, antibody was diluted at 1:200.

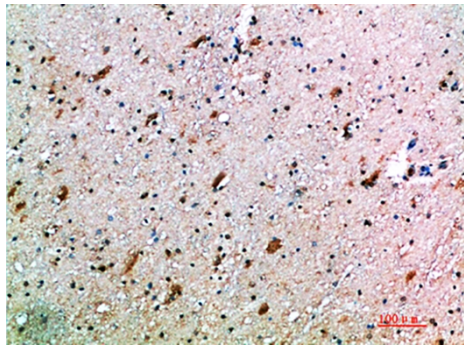


Fig.2. Immunohistochemical analysis of paraffin-embedded human-brain, antibody was diluted at 1:200.

**Note:** The product listed herein is for research use only and is not intended for use in human or clinical diagnosis. Suggested applications of our products are not recommendations to use our products in violation of any patent or as a license. We cannot be responsible for patent infringements or other violations that may occur with the use of this product.