



## ASIC1 Polyclonal Antibody

Cat #: ABP57824

Size: 30µl /100µl /200µl

### Product Information

	<b>Product Name:</b> ASIC1 Polyclonal Antibody		
	<b>Applications:</b> WB, IHC-P, ELISA		<b>Isotype:</b> Rabbit IgG
	<b>Reactivity:</b> Human, Mouse, Rat		
<b>REF</b>	<b>Catalog Number:</b> ABP57824	<b>LOT</b>	<b>Lot Number:</b> Refer to product label
	<b>Formulation:</b> Liquid		<b>Concentration:</b> 1 mg/ml
	<b>Storage:</b> Store at -20°C. Avoid repeated freeze / thaw cycles.		<b>Note:</b> Contain sodium azide.

**Background:** ASIC1 (Acid Sensing Ion Channel Subunit 1) is a Protein Coding gene. Diseases associated with ASIC1 include Brain Injury and Frozen Shoulder. Among its related pathways are Transport of glucose and other sugars, bile salts and organic acids, metal ions and amine compounds and Ion channel transport. ASIC1 encodes a member of the acid-sensing ion channel (ASIC) family of proteins, which are part of the degenerin/epithelial sodium channel (DEG/ENaC) superfamily. Members of the ASIC family are sensitive to amiloride and function in neurotransmission. The encoded proteins function in learning, pain transduction, touch sensation, and development of memory and fear. Alternatively spliced transcript variants have been described.

**Application Notes:** Optimal working dilutions should be determined experimentally by the investigator. Suggested starting dilutions are as follows: WB (1:500-1:2000), IHC-P (1:500-1:200), ELISA (1:10000-1:20000).

**Storage Buffer:** PBS, pH 7.4, containing 0.02% Sodium Azide as preservative and 50% Glycerol as stabilizer.

**Storage Instructions:** Stable for one year at -20°C from date of shipment. For maximum recovery of product, centrifuge the original vial after thawing and prior to removing the cap. Aliquot to avoid repeated freezing and thawing.

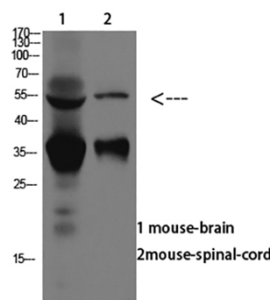


Fig.1. Western blot analysis of SW480 lysate, antibody was diluted at 1:1000. HRP, Goat Anti-Rabbit IgG (Cat #: A21020) secondary antibody was diluted at 1:20000.

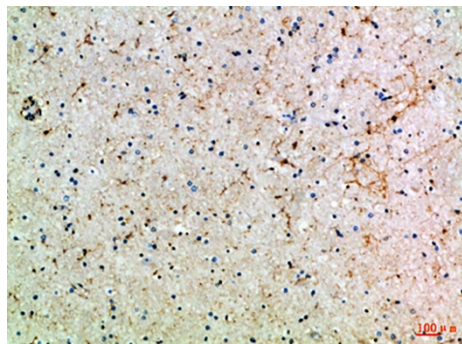


Fig.2. Immunohistochemical analysis of paraffin-embedded Human-brain, antibody was diluted at 1:100.

**Note:** The product listed herein is for research use only and is not intended for use in human or clinical diagnosis. Suggested applications of our products are not recommendations to use our products in violation of any patent or as a license. We cannot be responsible for patent infringements or other violations that may occur with the use of this product.