



DCT Polyclonal Antibody

Cat #: ABP57602

Size: 30µl /100µl /200µl

Product Information

	Product Name: DCT Polyclonal Antibody		
	Applications: WB, IHC-P, ELISA		Isotype: Rabbit IgG
	Reactivity: Human, Mouse, Rat		
REF	Catalog Number: ABP57602	LOT	Lot Number: Refer to product label
	Formulation: Liquid		Concentration: 1 mg/ml
	Storage: Store at -20°C. Avoid repeated freeze / thaw cycles.		Note: Contain sodium azide.

Background: DCT(L-dopachrome Delta-isomerase) is also named as TYRP2, TRP2 and belongs to the tyrosinase family. human TYRP2 protein has 83% identity and 90% similarity to the mouse sequence and has all the structural characteristics of the tyrosinase protein family, including a signal peptide, 15 conserved cysteine residues, 2 copper-binding domains, and a C-terminal membrane-spanning region(PMID: 8206391).

Application Notes: Optimal working dilutions should be determined experimentally by the investigator. Suggested starting dilutions are as follows: WB (1:500-1:2000), IHC-P (1:50-1:300), ELISA (1:5000-1:20000).

Storage Buffer: PBS, pH 7.4, containing 0.02% Sodium Azide as preservative and 50% Glycerol.

Storage Instructions: Stable for one year at -20°C from date of shipment. For maximum recovery of product, centrifuge the original vial after thawing and prior to removing the cap. Aliquot to avoid repeated freezing and thawing.

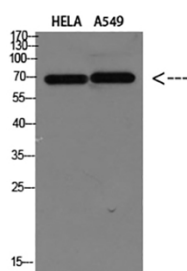


Fig.1. Western blot analysis of HELA A549 Cell Lysate, antibody was diluted at 1:1000. Secondary antibody (catalog#: A21020) was diluted at 1:20000.

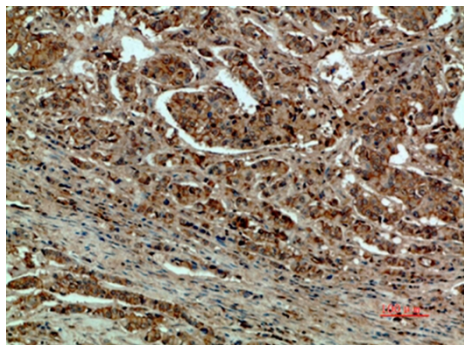


Fig.2. Immunohistochemical analysis of paraffin-embedded human-breast-cancer, antibody was diluted at 1:200.

Note: The product listed herein is for research use only and is not intended for use in human or clinical diagnosis. Suggested applications of our products are not recommendations to use our products in violation of any patent or as a license. We cannot be responsible for patent infringements or other violations that may occur with the use of this product.