



GABA T-1 Polyclonal Antibody

Cat #: ABP57594

Size: 30μl /100μl /200μl

Product Information

	Product Name: GABA T-1 Polyclonal Antibody		
	Applications: WB, ELISA		Isotype: Rabbit IgG
	Reactivity: Human, Mouse, Rat		
REF	Catalog Number: ABP57594	LOT	Lot Number: Refer to product label
	Formulation: Liquid		Concentration: 1 mg/ml
	Storage: Store at -20°C. Avoid repeated freeze / thaw cycles.		Note: Contain sodium azide.

Background: SLC6A1 (Solute Carrier Family 6 Member 1) is a Protein Coding gene. Diseases associated with SLC6A1 include myoclonic-atonic epilepsy and myoclonic-astatic epilepsy. Among its related pathways are Circadian entrainment and Benzodiazepine Pathway, Pharmacodynamics. GO annotations related to this gene include neurotransmitter: sodium symporter activity and gamma-aminobutyric acid: sodium symporter activity. An important paralog of this gene is SLC6A4.

Application Notes: Optimal working dilutions should be determined experimentally by the investigator. Suggested starting dilutions are as follows: WB (1:500-1:2000), ELISA (1:10000-1:20000).

Storage Buffer: PBS, pH 7.4, containing 0.02% Sodium Azide as preservative and 50% Glycerol.

Storage Instructions: Stable for one year at -20°C from date of shipment. For maximum recovery of product, centrifuge the original vial after thawing and prior to removing the cap. Aliquot to avoid repeated freezing and thawing.

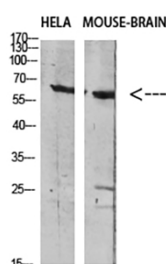


Fig.1. Western blot analysis of HELA Mouse-BRAIN Cell Lysate using antibody. Secondary antibody (catalog#: A21020) was diluted at 1:20000.

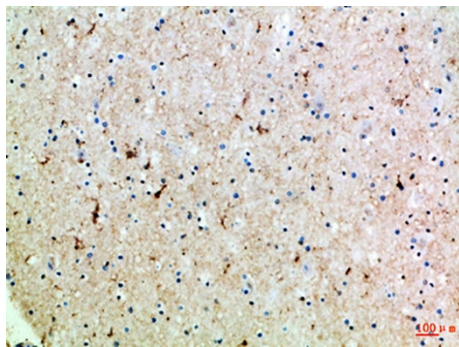


Fig.2. Immunohistochemical analysis of paraffin-embedded Human-brain, antibody was diluted at 1:100.

Note: The product listed herein is for research use only and is not intended for use in human or clinical diagnosis. Suggested applications of our products are not recommendations to use our products in violation of any patent or as a license. We cannot be responsible for patent infringements or other violations that may occur with the use of this product.