



## PI 3 Kinase Class 3 Polyclonal Antibody

Cat #: ABP57484

Size: 30µl /100µl /200µl

### Product Information

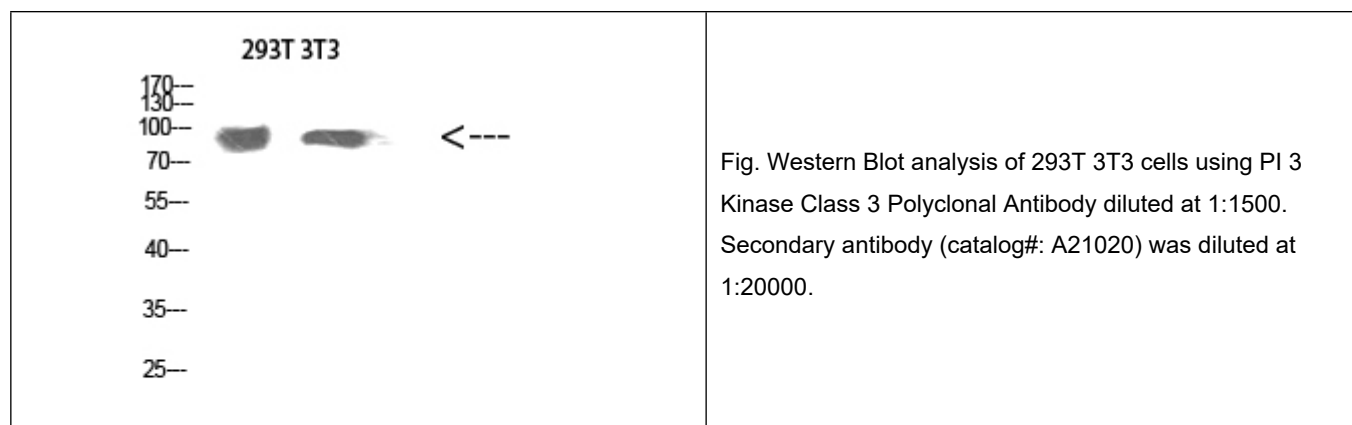
	<b>Product Name:</b> PI 3 Kinase Class 3 Polyclonal Antibody		
	<b>Applications:</b> WB, ELISA		<b>Isotype:</b> Rabbit IgG
	<b>Reactivity:</b> Human, Mouse, Rat, Cow, Pig		
<b>REF</b>	<b>Catalog Number:</b> ABP57484	<b>LOT</b>	<b>Lot Number:</b> Refer to product label
	<b>Formulation:</b> Liquid		<b>Concentration:</b> 1 mg/ml
	<b>Storage:</b> Store at -20°C. Avoid repeated freeze / thaw cycles.		<b>Note:</b> Contain sodium azide.

**Background:** PIK3C3 (Phosphatidylinositol 3-Kinase Catalytic Subunit Type 3) is a Protein Coding gene. Diseases associated with PIK3C3 include myopathy, centronuclear. Among its related pathways are Inositol phosphate metabolism (KEGG) and Metabolism. GO annotations related to this gene include transferase activity, transferring phosphorus-containing groups and binding. An important paralog of this gene is PIK3CB.

**Application Notes:** Optimal working dilutions should be determined experimentally by the investigator. Suggested starting dilutions are as follows: WB (1:500-1:2000), ELISA (1:10000-1:20000).

**Storage Buffer:** PBS containing 50% Glycerol, 0.5% BSA and 0.02% Sodium Azide.

**Storage Instructions:** Stable for one year at -20°C from date of shipment. For maximum recovery of product, centrifuge the original vial after thawing and prior to removing the cap. Aliquot to avoid repeated freezing and thawing.



**Note:** The product listed herein is for research use only and is not intended for use in human or clinical diagnosis. Suggested applications of our products are not recommendations to use our products in violation of any patent or as a license. We cannot be responsible for patent infringements or other violations that may occur with the use of this product.