



TLE1/2/3/4 Polyclonal Antibody

Cat #: ABP57471

Size: 30µl /100µl /200µl

Product Information

	Product Name: TLE1/2/3/4 Polyclonal Antibody		
	Applications: WB, ELISA		Isotype: Rabbit IgG
	Reactivity: Human, Mouse, Rat		
REF	Catalog Number: ABP57471	LOT	Lot Number: Refer to product label
	Formulation: Liquid		Concentration: 1 mg/ml
	Storage: Store at -20°C. Avoid repeated freeze / thaw cycles.		Note: Contain sodium azide.

Background: Transducin-like enhancer of split proteins (TLE1, TLE2, TLE3, TLE4, and TLE6) are mammalian homologs of Drosophila Groucho. TLEs contain several WD-repeats implicated in protein-protein interaction. TLEs are transcriptional co-repressors that bind to many transcription factors such as LEF1, Runx1, Oct-1, hepatocyte nuclear factor 3-β as well as histone H3. TLEs are differentially expressed during animal development and may have overlapping as well as distinct functions.

Application Notes: Optimal working dilutions should be determined experimentally by the investigator. Suggested starting dilutions are as follows: WB (1:500-1:2000), ELISA (1:10000-1:20000).

Storage Buffer: PBS containing 50% Glycerol, 0.5% BSA and 0.02% Sodium Azide.

Storage Instructions: Stable for one year at -20°C from date of shipment. For maximum recovery of product, centrifuge the original vial after thawing and prior to removing the cap. Aliquot to avoid repeated freezing and thawing.

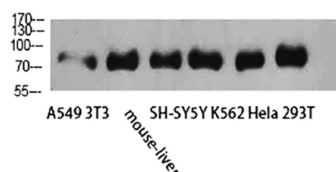


Fig.1. Western Blot analysis of A549 3T3 Mouse-liver SH-SY5Y K562 Hela 293T cells using TLE1/2/3/4 Polyclonal Antibody diluted at 1:2000. Secondary antibody (catalog#: A21020) was diluted at 1:20000.

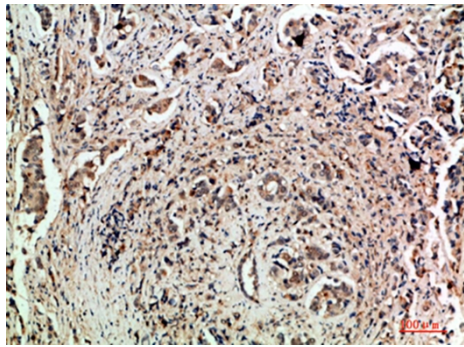


Fig.2. Immunohistochemical analysis of paraffin-embedded human-breast-cancer, antibody was diluted at 1:200.

Note: The product listed herein is for research use only and is not intended for use in human or clinical diagnosis. Suggested applications of our products are not recommendations to use our products in violation of any patent or as a license. We cannot be responsible for patent infringements or other violations that may occur with the use of this product.