



IL-22 Polyclonal Antibody

Cat #: ABP57408

Size: 30µl /100µl /200µl

Product Information

	Product Name: IL-22 Polyclonal Antibody		
	Applications: WB, ELISA		Isotype: Rabbit IgG
	Reactivity: Human, Mouse, Rat		
REF	Catalog Number: ABP57408	LOT	Lot Number: Refer to product label
	Formulation: Liquid		Concentration: 1 mg/ml
	Storage: Store at -20°C. Avoid repeated freeze / thaw cycles.		Note: Contain sodium azide.

Background: IL-10-related T cell-derived inducible factor (IL-22, also known as IL-TIF) is a cytokine that was originally identified in mouse as an IL-9 inducible gene in T cells and mast cells and shows 22% amino acid identity with IL-10. Additionally, IL-22 is induced by IL-9 in thymic lymphomas and by lectins in freshly isolated splenocytes. IL-22 is found in both the thymus and brain, which suggests that the role of this factor is not restricted to the immune system. IL-22 is a ligand for CRF2-4, a member of the class II cytokine receptor family. In contrast to IL-10, IL-22 does not inhibit the production of proinflammatory cytokines by monocytes in response to lipopolysaccharide nor does it impact IL-10 function on monocytes, but it has modest inhibitory effects on IL-4 production from Th2 T cells.

Application Notes: Optimal working dilutions should be determined experimentally by the investigator. Suggested starting dilutions are as follows: WB (1:500-1:2000), ELISA (1:10000). Not yet tested in other applications.

Storage Buffer: PBS containing 50% Glycerol, 0.5% BSA and 0.02% Sodium Azide.

Storage Instructions: Stable for one year at -20°C from date of shipment. For maximum recovery of product, centrifuge the original vial after thawing and prior to removing the cap. Aliquot to avoid repeated freezing and thawing.

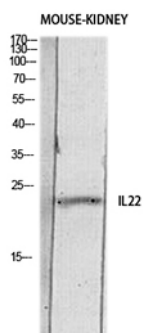


Fig. Western blot analysis of Mouse-KIDNEY lysis using IL22 antibody. Antibody was diluted at 1:500. Secondary antibody (catalog#: A21020) was diluted at 1:20000.

Note: The product listed herein is for research use only and is not intended for use in human or clinical diagnosis. Suggested applications of our products are not recommendations to use our products in violation of any patent or as a license. We cannot be responsible for patent infringements or other violations that may occur with the use of this product.