



STAM2 (phospho Tyr192) Polyclonal Antibody

Cat #: ABP56924

Size: 30µl /100µl /200µl

Product Information

	Product Name: STAM2 (phospho Tyr192) Polyclonal Antibody		
	Applications: WB, IHC-P, ELISA		Isotype: Rabbit IgG
	Reactivity: Human, Mouse		
REF	Catalog Number: ABP56924	LOT	Lot Number: Refer to product label
	Formulation: Liquid		Concentration: 1 mg/ml
	Storage: Store at -20°C. Avoid repeated freeze / thaw cycles.		Note: Contain sodium azide.

Background: Signal transducing adaptor molecule 2 (STAM2) is a ubiquitously expressed STAM family adaptor protein and an integral component of the ESCRT-0 complex. Similar to STAM1, STAM2 possesses a single SH3 domain and an immunoreceptor tyrosine-based activation motif (ITAM). Following activation of multiple growth factor and cytokine cell surface receptors, the STAM2 protein undergoes tyrosine phosphorylation and potentiates mitogenic signals driven by these receptors. Research studies demonstrate that STAM2 is localized to complexes containing Eps15, Hrs, and STAM1 proteins on early endosome membranes. A tandem, amino-terminal VHS (Vps27/Hrs/STAM) domain and UIM (ubiquitin-interacting) motif within STAM2 facilitate STAM2 interaction with ubiquitinated cargo proteins, suggesting that this adaptor participates in the endosomal sorting of ubiquitinated proteins targeted for lysosomal degradation. Gene targeting studies have revealed an indispensable role for STAM2 in T-cell development.

Application Notes: Optimal working dilutions should be determined experimentally by the investigator. Suggested starting dilutions are as follows: WB (1:500-1:2000), IHC-P (1:100-1:300), ELISA (1:10000). Not yet tested in other applications.

Storage Buffer: PBS containing 50% Glycerol, 0.5% BSA and 0.02% Sodium Azide.

Storage Instructions: Stable for one year at -20°C from date of shipment. For maximum recovery of product, centrifuge the original vial after thawing and prior to removing the cap. Aliquot to avoid repeated freezing and thawing.

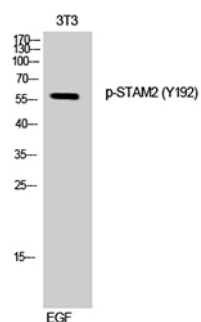


Fig. Western Blot analysis of 3T3 cells using Phospho-STAM2 (Y192) Polyclonal Antibody.

Note: The product listed herein is for research use only and is not intended for use in human or clinical diagnosis. Suggested applications of our products are not recommendations to use our products in violation of any patent or as a license. We cannot be responsible for patent infringements or other violations that may occur with the use of this product.