



## BCAS3 Polyclonal Antibody

Cat #: ABP55678

Size: 30µl /100µl /200µl

### Product Information

	<b>Product Name:</b> BCAS3 Polyclonal Antibody		
	<b>Applications:</b> WB, ELISA		<b>Isotype:</b> Rabbit IgG
	<b>Reactivity:</b> Human, Mouse		
<b>REF</b>	<b>Catalog Number:</b> ABP55678	<b>LOT</b>	<b>Lot Number:</b> Refer to product label
	<b>Formulation:</b> Liquid		<b>Concentration:</b> 1 mg/ml
	<b>Storage:</b> Store at -20°C. Avoid repeated freeze / thaw cycles.		<b>Note:</b> Contain sodium azide.

**Background:** Rudhira/BCAS3 (Breast Cancer Amplified Sequence 3) is a conserved protein expressed in the embryonic vasculature and malignant tumors. Rudhira is a predicted WD40 domain protein. During mouse development Rudhira is expressed in erythropoietic and angiogenic precursors but not in their differentiated progeny. This transient expression of Rudhira is also seen in normal adult angiogenesis. BCAS3, the human ortholog of Rudhira is 98% identical and the gene maps to a breakpoint of hematological neoplasms on chromosome 17q23. BCAS3 is also expressed in vascular development in embryoid bodies in vitro and was originally identified as a gene over-expressed in breast cancers. It is reported to be a target of metastasis associated protein-1 (MTA-1). Further BCAS3 expression is also upregulated in grade III and IV glioblastomas where it is misexpressed in the tumor cells.

**Application Notes:** Optimal working dilutions should be determined experimentally by the investigator. Suggested starting dilutions are as follows: WB (1:500-1:2000), ELISA (1:5000). Not yet tested in other applications.

**Storage Buffer:** PBS containing 50% Glycerol, 0.5% BSA and 0.02% Sodium Azide.

**Storage Instructions:** Stable for one year at -20°C from date of shipment. For maximum recovery of product, centrifuge the original vial after thawing and prior to removing the cap. Aliquot to avoid repeated freezing and thawing.

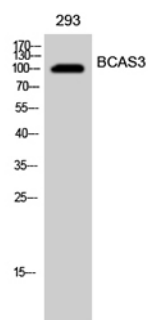


Fig. Western Blot analysis of 293 cells using BCAS3 Polyclonal Antibody.

**Note:** The product listed herein is for research use only and is not intended for use in human or clinical diagnosis. Suggested applications of our products are not recommendations to use our products in violation of any patent or as a license. We cannot be responsible for patent infringements or other violations that may occur with the use of this product.