



PABP3 Polyclonal Antibody

Cat #: ABP55455

Size: 30µl /100µl /200µl

Product Information

	Product Name: PABP3 Polyclonal Antibody		
	Applications: WB, IHC-P, ELISA		Isotype: Rabbit IgG
	Reactivity: Human		
REF	Catalog Number: ABP55455	LOT	Lot Number: Refer to product label
	Formulation: Liquid		Concentration: 1 mg/ml
	Storage: Store at -20°C. Avoid repeated freeze / thaw cycles.		Note: Contain sodium azide.

Background: PABPC3 encodes a poly (A) binding protein. The protein shuttles between the nucleus and cytoplasm and binds to the 3' poly (A) tail of eukaryotic messenger RNAs via RNA-recognition motifs. The binding of this protein to poly (A) promotes ribosome recruitment and translation initiation; it is also required for poly (A) shortening which is the first step in mRNA decay. PABPC3 is part of a small gene family including three protein-coding genes and several pseudogenes.

Application Notes: Optimal working dilutions should be determined experimentally by the investigator. Suggested starting dilutions are as follows: WB (1:500-1:2000), IHC-P (1:100-1:300), ICC (1:200-1:1000), ELISA (1:5000). Not yet tested in other applications.

Storage Buffer: PBS containing 50% Glycerol, 0.5% BSA and 0.02% Sodium Azide.

Storage Instructions: Stable for one year at -20°C from date of shipment. For maximum recovery of product, centrifuge the original vial after thawing and prior to removing the cap. Aliquot to avoid repeated freezing and thawing.

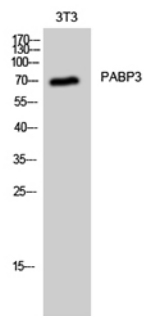


Fig. Western Blot analysis of 3T3 cells using PABP3 Polyclonal Antibody.

Note: The product listed herein is for research use only and is not intended for use in human or clinical diagnosis. Suggested applications of our products are not recommendations to use our products in violation of any patent or as a license. We cannot be responsible for patent infringements or other violations that may occur with the use of this product.