



NSF Polyclonal Antibody

Cat #: ABP55420

Size: 30µl /100µl /200µl

Product Information

	Product Name: NSF Polyclonal Antibody		
	Applications: WB, ELISA		Isotype: Rabbit IgG
	Reactivity: Human, Mouse, Rat		
REF	Catalog Number: ABP55420	LOT	Lot Number: Refer to product label
	Formulation: Liquid		Concentration: 1 mg/ml
	Storage: Store at -20°C. Avoid repeated freeze / thaw cycles.		Note: Contain sodium azide.

Background: The N-ethylmaleimide-sensitive fusion protein (NSF) is a 80 kDa cytosol protein that is expressed in all cell types. NSF functions as an ATPase and it is a part of the 20S membrane fusion apparatus with the vesicular SNAP receptor (v-SNARE) synaptobrevin, and the target SNAREs (t-SNARE) syntaxin and SNAP-25. With the hydrolysis of ATP by NSF, the released energy may set-up or drive membrane fusion processes. NSF is required for general membrane transport and trafficking.

Application Notes: Optimal working dilutions should be determined experimentally by the investigator. Suggested starting dilutions are as follows: WB (1:500-1:2000), ELISA (1:40000). Not yet tested in other applications.

Storage Buffer: PBS containing 50% Glycerol, 0.5% BSA and 0.02% Sodium Azide.

Storage Instructions: Stable for one year at -20°C from date of shipment. For maximum recovery of product, centrifuge the original vial after thawing and prior to removing the cap. Aliquot to avoid repeated freezing and thawing.

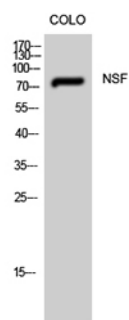


Fig. Western Blot analysis of CoLo cells using NSF Polyclonal Antibody.

Note: The product listed herein is for research use only and is not intended for use in human or clinical diagnosis. Suggested applications of our products are not recommendations to use our products in violation of any patent or as a license. We cannot be responsible for patent infringements or other violations that may occur with the use of this product.