



## NMDA $\zeta$ 1 (phospho Ser896) Polyclonal Antibody

Cat #: ABP54647

Size: 30 $\mu$ l /100 $\mu$ l /200 $\mu$ l

### Product Information

|   |  |   |   |
|---|--|---|---|
|   | <b>Product Name:</b> NMDA $\zeta$ 1 (phospho Ser896) Polyclonal Antibody |   |   |
|   | <b>Applications:</b> WB, IHC-P, ELISA                                    |   | <b>Isotype:</b> Rabbit IgG                |
|   | <b>Reactivity:</b> Human, Mouse, Rat                                     |   |   |
| <b>REF</b>  | <b>Catalog Number:</b> ABP54647  | <b>LOT</b>  | <b>Lot Number:</b> Refer to product label |
|   | <b>Formulation:</b> Liquid   |   | <b>Concentration:</b> 1 mg/ml             |
|  | <b>Storage:</b> Store at -20°C. Avoid repeated freeze / thaw cycles.     |  | <b>Note:</b> Contain sodium azide.        |

**Background:** The glutamate ionotropic receptor NMDA type subunit 1 encoded by GRIN1 is a critical subunit of N-methyl-D-aspartate receptors, members of the glutamate receptor channel superfamily which are heteromeric protein complexes with multiple subunits arranged to form a ligand-gated ion channel. These subunits play a key role in the plasticity of synapses, which is believed to underlie memory and learning. Cell-specific factors are thought to control expression of different isoforms, possibly contributing to the functional diversity of the subunits. Alternatively spliced transcript variants have been described.

**Application Notes:** Optimal working dilutions should be determined experimentally by the investigator. Suggested starting dilutions are as follows: WB (1:500-1:2000), IHC-P (1:100-1:300), ELISA (1:40000). Not yet tested in other applications.

**Storage Buffer:** PBS containing 50% Glycerol, 0.5% BSA and 0.02% Sodium Azide.

**Storage Instructions:** Stable for one year at -20°C from date of shipment. For maximum recovery of product, centrifuge the original vial after thawing and prior to removing the cap. Aliquot to avoid repeated freezing and thawing.

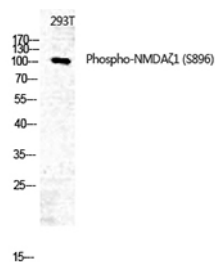


Fig. Western Blot analysis of 293T using Phospho-NMDA $\zeta$ 1 (S896) Polyclonal Antibody. Antibody was diluted at 1:500.

**Note:** The product listed herein is for research use only and is not intended for use in human or clinical diagnosis. Suggested applications of our products are not recommendations to use our products in violation of any patent or as a license. We cannot be responsible for patent infringements or other violations that may occur with the use of this product.