



PP2C ϵ Polyclonal Antibody

Cat #: ABP53911

Size: 30 μ l /100 μ l /200 μ l

Product Information

	Product Name: PP2C ϵ Polyclonal Antibody		
	Applications: WB, ELISA		Isotype: Rabbit IgG
	Reactivity: Human, Mouse, Rat		
REF	Catalog Number: ABP53911	LOT	Lot Number: Refer to product label
	Formulation: Liquid		Concentration: 1 mg/ml
	Storage: Store at -20°C. Avoid repeated freeze / thaw cycles.		Note: Contain sodium azide.

Background: Protein phosphatase 1L encoded by PPM1L is a magnesium or manganese-requiring phosphatase that is involved in several signaling pathways. The encoded protein downregulates apoptosis signal-regulating kinase 1, a protein that initiates a signaling cascade that leads to apoptosis when cells are subjected to cytotoxic stresses. This protein also is an endoplasmic reticulum transmembrane protein that helps regulate ceramide transport from the endoplasmic reticulum to the Golgi apparatus. Finally, this gene may be involved in adiposity since it is upregulated in adipose tissues. Several transcript variants encoding different isoforms have been found for this gene.

Application Notes: Optimal working dilutions should be determined experimentally by the investigator. Suggested starting dilutions are as follows: WB (1:500-1:2000), ELISA (1:10000). Not yet tested in other applications.

Storage Buffer: PBS containing 50% Glycerol, 0.5% BSA and 0.02% Sodium Azide.

Storage Instructions: Stable for one year at -20°C from date of shipment. For maximum recovery of product, centrifuge the original vial after thawing and prior to removing the cap. Aliquot to avoid repeated freezing and thawing.

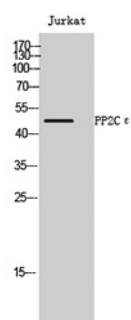


Fig. Western Blot analysis of Jurkat cells using PP2Cε Polyclonal Antibody.

Note: The product listed herein is for research use only and is not intended for use in human or clinical diagnosis. Suggested applications of our products are not recommendations to use our products in violation of any patent or as a license. We cannot be responsible for patent infringements or other violations that may occur with the use of this product.