



## Casein Kinase Iα (phospho Tyr294) Polyclonal Antibody

Cat #: ABP53858

Size: 30μl /100μl /200μl

### Product Information

	<b>Product Name:</b> Casein Kinase Iα (phospho Tyr294) Polyclonal Antibody		
	<b>Applications:</b> WB, IHC-P, ELISA		<b>Isotype:</b> Rabbit IgG
	<b>Reactivity:</b> Human, Mouse, Rat		
<b>REF</b>	<b>Catalog Number:</b> ABP53858	<b>LOT</b>	<b>Lot Number:</b> Refer to product label
	<b>Formulation:</b> Liquid		<b>Concentration:</b> 1 mg/ml
	<b>Storage:</b> Store at -20°C. Avoid repeated freeze / thaw cycles.		<b>Note:</b> Contain sodium azide.

**Background:** CSNK1A1 (Casein Kinase 1 Alpha 1) is a Protein Coding gene. Among its related pathways are Signaling by GPCR and Infectious disease. GO annotations related to this gene include transferase activity, transferring phosphorus-containing groups and protein tyrosine kinase activity. An important paralog of this gene is CSNK1G2. Casein kinases are operationally defined by their preferential utilization of acidic proteins such as caseins as substrates. It can phosphorylate a large number of proteins. Participates in Wnt signaling. Phosphorylates CTNNB1 at Ser-45. May phosphorylate PER1 and PER2. May play a role in segregating chromosomes during mitosis (PubMed: 11955436, PubMed: 1409656, PubMed: 18305108). May play a role in keratin cytoskeleton disassembly and thereby, it may regulate epithelial cell migration (PubMed: 23902688). Casein kinase I (CK1) is a monomeric serine-threonine protein kinase with 7 isoforms: alpha, beta, gamma1, gamma2, gamma3, delta and epsilon. CK1 is involved in many cellular processes including DNA repair, cell division, nuclear localization and membrane transport. Isoforms are also integral to development.

**Application Notes:** Optimal working dilutions should be determined experimentally by the investigator. Suggested starting dilutions are as follows: WB (1:500-1:2000), IHC-P (1:100-1:300), ELISA (1:10000). Not yet tested in other applications.

**Storage Buffer:** PBS containing 50% Glycerol, 0.5% BSA and 0.02% Sodium Azide.

**Storage Instructions:** Stable for one year at -20°C from date of shipment. For maximum recovery of product, centrifuge the original vial after thawing and prior to removing the cap. Aliquot to avoid repeated freezing and thawing.

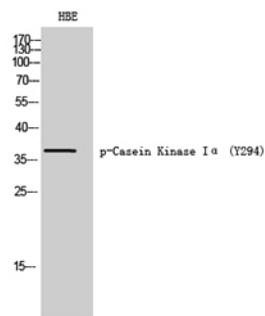


Fig. Western Blot analysis of HBE cells using Phospho-Casein Kinase Iα (Y294) Polyclonal Antibody diluted at 1:1000.

**Note:** The product listed herein is for research use only and is not intended for use in human or clinical diagnosis. Suggested applications of our products are not recommendations to use our products in violation of any patent or as a license. We cannot be responsible for patent infringements or other violations that may occur with the use of this product.