



## LMTK3 Polyclonal Antibody

Cat #: ABP53649

Size: 30µl /100µl /200µl

### Product Information

	<b>Product Name:</b> LMTK3 Polyclonal Antibody		
	<b>Applications:</b> WB, IHC-P, ELISA		<b>Isotype:</b> Rabbit IgG
	<b>Reactivity:</b> Human, Mouse		
<b>REF</b>	<b>Catalog Number:</b> ABP53649	<b>LOT</b>	<b>Lot Number:</b> Refer to product label
	<b>Formulation:</b> Liquid		<b>Concentration:</b> 1 mg/ml
	<b>Storage:</b> Store at -20°C. Avoid repeated freeze / thaw cycles.		<b>Note:</b> Contain sodium azide.

**Background:** LMTK3 (Lemur Tyrosine Kinase 3) is a Protein Coding gene. Among its related pathways are ERK Signaling and Akt Signaling. GO annotations related to this gene include transferase activity, transferring phosphorus-containing groups and protein tyrosine kinase activity. An important paralog of this gene is AATK. rotein kinase which phosphorylates ESR1 (in vitro) and protects it against proteasomal degradation. May also regulate ESR1 levels indirectly via a PKC-AKT-FOXO3 pathway where it decreases the activity of PKC and the phosphorylation of AKT, thereby increasing binding of transcriptional activator FOXO3 to the ESR1 promoter and increasing ESR1 transcription (PubMed: 21602804). Involved in endocytic trafficking of N-methyl-D-aspartate receptors (NMDAR) in neurons (By similarity).

**Application Notes:** Optimal working dilutions should be determined experimentally by the investigator. Suggested starting dilutions are as follows: WB (1:500-1:2000), IHC-P (1:100-1:300), ELISA (1:20000). Not yet tested in other applications.

**Storage Buffer:** PBS containing 50% Glycerol, 0.5% BSA and 0.02% Sodium Azide.

**Storage Instructions:** Stable for one year at -20°C from date of shipment. For maximum recovery of product, centrifuge the original vial after thawing and prior to removing the cap. Aliquot to avoid repeated freezing and thawing.

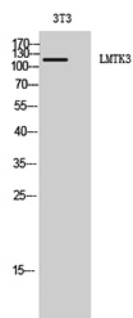


Fig. Western Blot analysis of 3T3 cells using LMTK3 Polyclonal Antibody diluted at 1:2000.

**Note:** The product listed herein is for research use only and is not intended for use in human or clinical diagnosis. Suggested applications of our products are not recommendations to use our products in violation of any patent or as a license. We cannot be responsible for patent infringements or other violations that may occur with the use of this product.