



Lambda 5 Polyclonal Antibody

Cat #: ABP53369

Size: 30µl /100µl /200µl

Product Information

	Product Name: Lambda 5 Polyclonal Antibody		
	Applications: WB, IHC-P, ELISA		Isotype: Rabbit IgG
	Reactivity: Human		
REF	Catalog Number: ABP53369	LOT	Lot Number: Refer to product label
	Formulation: Liquid		Concentration: 1 mg/ml
	Storage: Store at -20°C. Avoid repeated freeze / thaw cycles.		Note: Contain sodium azide.

Background: Lambda 5 (also called Immunoglobulin lambda-like polypeptide 1 or CD179b antigen) and VpreB comprise the surrogate light chain of the pre-B cell receptor complex. SL chain is also part of a quality control mechanism that tests a m-chain for its ability to pair with conventional L chains. It can form Ig-like complexes with the heavy (H) chain, the DHJHC m-protein or the p55 chain. Production of the surrogate light chain begins at the stage of pro-B cells, continues during the pre-B-cell stage and halts at the immature B cell stage. Once pre-BCR is expressed, SL chain expression is turned off. As pre-B II cells proliferate, SL is diluted out, thus limiting pre-BCR formation. Lambda 5 is critical for B cell development in mammals. Expression of Lambda 5 is highest in liver, pre- B-lymphocytes and bone marrow, the major source of B cell precursors.

Application Notes: Optimal working dilutions should be determined experimentally by the investigator. Suggested starting dilutions are as follows: WB (1:500-1:2000), IHC-P (1:100-1:300), ELISA (1:10000). Not yet tested in other applications.

Storage Buffer: PBS containing 50% Glycerol, 0.5% BSA and 0.02% Sodium Azide.

Storage Instructions: Stable for one year at -20°C from date of shipment. For maximum recovery of product, centrifuge the original vial after thawing and prior to removing the cap. Aliquot to avoid repeated freezing and thawing.

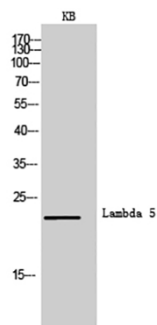


Fig.1. Western Blot analysis of KB cells using Lambda 5 Polyclonal Antibody. Secondary antibody (catalog#: A21020) was diluted at 1:20000.

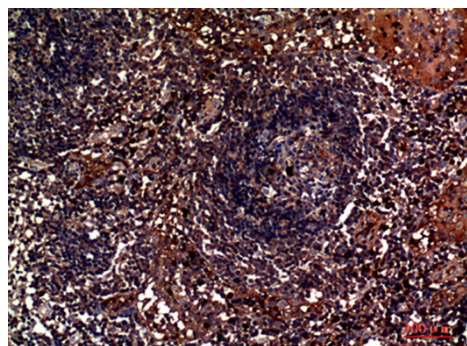


Fig.2. Immunohistochemical analysis of paraffin-embedded human-lymph, antibody was diluted at 1:100.

Note: The product listed herein is for research use only and is not intended for use in human or clinical diagnosis. Suggested applications of our products are not recommendations to use our products in violation of any patent or as a license. We cannot be responsible for patent infringements or other violations that may occur with the use of this product.