



SR-1F Polyclonal Antibody

Cat #: ABP52492

Size: 30µl /100µl /200µl

Product Information

	Product Name: SR-1F Polyclonal Antibody		
	Applications: WB, IF, ELISA		Isotype: Rabbit IgG
	Reactivity: Human, Mouse, Rat, Monkey		
REF	Catalog Number: ABP52492	LOT	Lot Number: Refer to product label
	Formulation: Liquid		Concentration: 1 mg/ml
	Storage: Store at -20°C. Avoid repeated freeze / thaw cycles.		Note: Contain sodium azide.

Background: HTR1F (5-Hydroxytryptamine Receptor 1F) is a Protein Coding gene. Diseases associated with HTR1F include migraine with or without aura 1. Among its related pathways are Signaling by GPCR and cAMP signaling pathway. Gene Ontology (GO) annotations related to this gene include G-protein coupled receptor activity and serotonin binding. An important paralog of this gene is DRD4. G-protein coupled receptor for 5-hydroxytryptamine (serotonin). Also functions as a receptor for various alkaloids and psychoactive substances. Ligand binding causes a conformation change that triggers signaling via guanine nucleotide-binding proteins (G proteins) and modulates the activity of down-stream effectors, such as adenylate cyclase. Signaling inhibits adenylate cyclase activity. Serotonin 5-HT1F receptors, previously known as 5-HT1Eb receptors, are located primarily in the hippocampus, cortex and dorsal raphe nucleus. The human 5-HT1F receptor is closely related to the 5-HT1E receptor and its gene has been localized to chromosome 3 (3q11).

Application Notes: Optimal working dilutions should be determined experimentally by the investigator. Suggested starting dilutions are as follows: WB (1:500-1:2000), IF (1:200-1:1000), ELISA (1:40000). Not yet tested in other applications.

Storage Buffer: PBS containing 50% Glycerol, 0.5% BSA and 0.02% Sodium Azide.

Storage Instructions: Stable for one year at -20°C from date of shipment. For maximum recovery of product, centrifuge the original vial after thawing and prior to removing the cap. Aliquot to avoid repeated freezing and thawing.

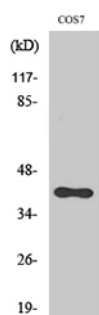


Fig. Western Blot analysis of various cells using SR-1F Polyclonal Antibody diluted at 1:1000.

Note: The product listed herein is for research use only and is not intended for use in human or clinical diagnosis. Suggested applications of our products are not recommendations to use our products in violation of any patent or as a license. We cannot be responsible for patent infringements or other violations that may occur with the use of this product.