



SLC43A1 Polyclonal Antibody

Cat #: ABP52453

Size: 30µl /100µl /200µl

Product Information

	Product Name: SLC43A1 Polyclonal Antibody		
	Applications: WB, ELISA		Isotype: Rabbit IgG
	Reactivity: Human		
REF	Catalog Number: ABP52453	LOT	Lot Number: Refer to product label
	Formulation: Liquid		Concentration: 1 mg/ml
	Storage: Store at -20°C. Avoid repeated freeze / thaw cycles.		Note: Contain sodium azide.

Background: SLC43A1 belongs to the system L family of plasma membrane carrier proteins that transports large neutral amino acids (Babu et al. 2003 [PubMed 12930836]). supplied by OMIM, Mar 2008]SLC43A1 (Solute Carrier Family 43 Member 1) is a Protein Coding gene. Diseases associated with SLC43A1 include prostate cancer. Among its related pathways are Transport of glucose and other sugars, bile salts and organic acids, metal ions and amine compounds. Gene Ontology (GO) annotations related to this gene include neutral amino acid transmembrane transporter activity and L-amino acid transmembrane transporter activity. An important paralog of this gene is ENSG00000254979. Sodium-independent, high affinity transport of large neutral amino acids. Has narrower substrate selectivity compared to SLC7A5 and SLC7A8 and mainly transports branched-chain amino acids and phenylalanine. Plays a role in the development of human prostate cancer, from prostatic intraepithelial neoplasia to invasive prostate cancer.

Application Notes: Optimal working dilutions should be determined experimentally by the investigator. Suggested starting dilutions are as follows: WB (1:500-1:2000), ELISA (1:20000). Not yet tested in other applications.

Storage Buffer: PBS containing 50% Glycerol, 0.5% BSA and 0.02% Sodium Azide.

Storage Instructions: Stable for one year at -20°C from date of shipment. For maximum recovery of product, centrifuge the original vial after thawing and prior to removing the cap. Aliquot to avoid repeated freezing and thawing.

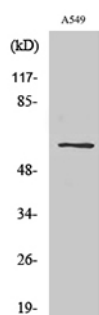


Fig. Western Blot analysis of various cells using SLC43A1 Polyclonal Antibody.

Note: The product listed herein is for research use only and is not intended for use in human or clinical diagnosis. Suggested applications of our products are not recommendations to use our products in violation of any patent or as a license. We cannot be responsible for patent infringements or other violations that may occur with the use of this product.