



## OCRL Polyclonal Antibody

Cat #: ABP51999

Size: 30µl /100µl /200µl

### Product Information

|   |  |   |   |
|---|--|---|---|
|   | <b>Product Name:</b> OCRL Polyclonal Antibody                        |   |   |
|   | <b>Applications:</b> WB, ELISA                                       |   | <b>Isotype:</b> Rabbit IgG                |
|   | <b>Reactivity:</b> Human, Mouse                                      |   |   |
| <b>REF</b>  | <b>Catalog Number:</b> ABP51999                                      | <b>LOT</b>  | <b>Lot Number:</b> Refer to product label |
|   | <b>Formulation:</b> Liquid   |   | <b>Concentration:</b> 1 mg/ml             |
|  | <b>Storage:</b> Store at -20°C. Avoid repeated freeze / thaw cycles. |  | <b>Note:</b> Contain sodium azide.        |

**Background:** OCRL encodes an inositol polyphosphate 5-phosphatase. OCRL, inositol polyphosphate-5-phosphatase is involved in regulating membrane trafficking and is located in numerous subcellular locations including the trans-Golgi network, clathrin-coated vesicles and, endosomes and the plasma membrane. OCRL, inositol polyphosphate-5-phosphatase may also play a role in primary cilium formation. Mutations in OCRL cause oculocerebrorenal syndrome of Lowe and also Dent disease. Alternate splicing results in multiple transcript variants.

**Application Notes:** Optimal working dilutions should be determined experimentally by the investigator. Suggested starting dilutions are as follows: WB (1:500-1:2000), ELISA (1:10000). Not yet tested in other applications.

**Storage Buffer:** PBS containing 50% Glycerol, 0.5% BSA and 0.02% Sodium Azide.

**Storage Instructions:** Stable for one year at -20°C from date of shipment. For maximum recovery of product, centrifuge the original vial after thawing and prior to removing the cap. Aliquot to avoid repeated freezing and thawing.

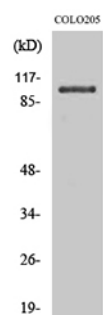


Fig. Western Blot analysis of various cells using OCRL Polyclonal Antibody.

**Note:** The product listed herein is for research use only and is not intended for use in human or clinical diagnosis. Suggested applications of our products are not recommendations to use our products in violation of any patent or as a license. We cannot be responsible for patent infringements or other violations that may occur with the use of this product.