



NHE-9 Polyclonal Antibody

Cat #: ABP51962

Size: 30µl /100µl /200µl

Product Information

	Product Name: NHE-9 Polyclonal Antibody		
	Applications: WB, ELISA		Isotype: Rabbit IgG
	Reactivity: Human, Mouse		
REF	Catalog Number: ABP51962	LOT	Lot Number: Refer to product label
	Formulation: Liquid		Concentration: 1 mg/ml
	Storage: Store at -20°C. Avoid repeated freeze / thaw cycles.		Note: Contain sodium azide.

Background: SLC9A9 encodes a sodium/proton exchanger that is a member of the solute carrier 9 protein family. Solute carrier family 9 member A9 localizes to the late recycling endosomes and may play an important role in maintaining cation homeostasis. Mutations in SLC9A9 are associated with autism susceptibility 16 and attention-deficit/hyperactivity disorder.

Application Notes: Optimal working dilutions should be determined experimentally by the investigator. Suggested starting dilutions are as follows: WB (1:500-1:2000), ELISA (1:40000). Not yet tested in other applications.

Storage Buffer: PBS containing 50% Glycerol, 0.5% BSA and 0.02% Sodium Azide.

Storage Instructions: Stable for one year at -20°C from date of shipment. For maximum recovery of product, centrifuge the original vial after thawing and prior to removing the cap. Aliquot to avoid repeated freezing and thawing.

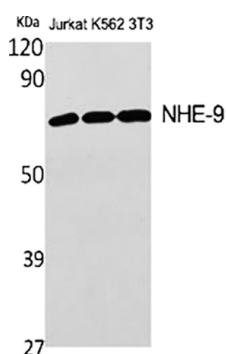


Fig.1. Western Blot analysis of various cells using NHE-9 Polyclonal Antibody.

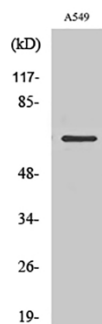


Fig.2. Western Blot analysis of RAW264.7 cells using NHE-9 Polyclonal Antibody.

Note: The product listed herein is for research use only and is not intended for use in human or clinical diagnosis. Suggested applications of our products are not recommendations to use our products in violation of any patent or as a license. We cannot be responsible for patent infringements or other violations that may occur with the use of this product.