



## EID-1 Polyclonal Antibody

Cat #: ABP51243

Size: 30µl /100µl /200µl

### Product Information

	<b>Product Name:</b> EID-1 Polyclonal Antibody		
	<b>Applications:</b> WB, IHC-P, IF, ELISA		<b>Isotype:</b> Rabbit IgG
	<b>Reactivity:</b> Human		
<b>REF</b>	<b>Catalog Number:</b> ABP51243	<b>LOT</b>	<b>Lot Number:</b> Refer to product label
	<b>Formulation:</b> Liquid		<b>Concentration:</b> 1 mg/ml
	<b>Storage:</b> Store at -20°C. Avoid repeated freeze / thaw cycles.		<b>Note:</b> Contain sodium azide.

**Background:** E1A-like inhibitor of differentiation-1 (EID-1), an acetyltransferase enzyme, binds both the retinoblastoma protein (Rb), a regulator of cell cycle and tissue specific transcription, and the adenovirus E1A-associated cellular p300 transcriptional co-activator protein. EID-1 inhibits cellular differentiation by blocking the histone acetyltransferase activity of p300. EID-1 also acetylates both histones and non-histone proteins such as NCOA3 co-activator. By acetylating histones, EID-1 gives a specific tag for transcriptional activation. In addition to binding Rb and p300, EID-1 also binds to phosphorylated CREB protein, mediating cAMP gene regulation. EID-1 augments the activity of phosphorylated CREB and activates transcription of cAMP responsive genes as a co-activator.

**Application Notes:** Optimal working dilutions should be determined experimentally by the investigator. Suggested starting dilutions are as follows: WB (1:500-1:2000), IHC-P (1:100-1:300), IF (1:200-1:1000), ELISA (1:10000). Not yet tested in other applications.

**Storage Buffer:** PBS containing 50% Glycerol, 0.5% BSA and 0.02% Sodium Azide.

**Storage Instructions:** Stable for one year at -20°C from date of shipment. For maximum recovery of product, centrifuge the original vial after thawing and prior to removing the cap. Aliquot to avoid repeated freezing and thawing.

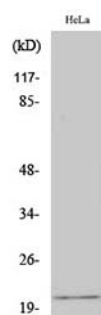


Fig. Western Blot analysis of various cells using EID-1 Polyclonal Antibody.

**Note:** The product listed herein is for research use only and is not intended for use in human or clinical diagnosis. Suggested applications of our products are not recommendations to use our products in violation of any patent or as a license. We cannot be responsible for patent infringements or other violations that may occur with the use of this product.