



## EGFL5 Polyclonal Antibody

Cat #: ABP51234

Size: 30µl /100µl /200µl

### Product Information

	<b>Product Name:</b> EGFL5 Polyclonal Antibody		
	<b>Applications:</b> WB, ELISA		<b>Isotype:</b> Rabbit IgG
	<b>Reactivity:</b> Human, Mouse, Rat		
<b>REF</b>	<b>Catalog Number:</b> ABP51234	<b>LOT</b>	<b>Lot Number:</b> Refer to product label
	<b>Formulation:</b> Liquid		<b>Concentration:</b> 1 mg/ml
	<b>Storage:</b> Store at -20°C. Avoid repeated freeze / thaw cycles.		<b>Note:</b> Contain sodium azide.

**Background:** MEGF9 (Multiple EGF-like domains protein 9; also EGF-like protein 5) is a 63 kDa (predicted) novel transmembrane glycoprotein that shares some homology to beta -chains of laminin. It is expressed by hepatocytes, cerebellar Purkinje cells, Schwann cells, keratinocytes and intestinal epithelium. MEGF9 is suggested to participate in cell motility, and its absence correlates with tumor cell migration. Mature human MEGF9 is 572 amino acids (aa) in length. It is a single span type I transmembrane protein that contains a 484 aa extracellular region (aa 31-514) plus a 68 aa C-terminal cytoplasmic domain. The extracellular region possesses a lengthy Pro-rich region (aa 55-200), followed by five EGF-like domains (aa 204-451). MEGF9 may run at approximately 160 kDa in SDS-PAGE, suggesting either heavy glycosylation or dimerization. Over aa 36-514, human MEGF9 shares 76% aa sequence identity with mouse MEGF9.

**Application Notes:** Optimal working dilutions should be determined experimentally by the investigator. Suggested starting dilutions are as follows: WB (1:500-1:2000), ELISA (1:40000). Not yet tested in other applications.

**Storage Buffer:** PBS containing 50% Glycerol, 0.5% BSA and 0.02% Sodium Azide.

**Storage Instructions:** Stable for one year at -20°C from date of shipment. For maximum recovery of product, centrifuge the original vial after thawing and prior to removing the cap. Aliquot to avoid repeated freezing and thawing.

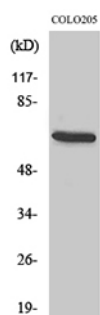


Fig. Western Blot analysis of various cells using EGFL5 Polyclonal Antibody diluted at 1:500.

**Note:** The product listed herein is for research use only and is not intended for use in human or clinical diagnosis. Suggested applications of our products are not recommendations to use our products in violation of any patent or as a license. We cannot be responsible for patent infringements or other violations that may occur with the use of this product.