



Dok-6 Polyclonal Antibody

Cat #: ABP51195

Size: 30µl /100µl /200µl

Product Information

	Product Name: Dok-6 Polyclonal Antibody		
	Applications: WB, IHC-P, IF, ELISA		Isotype: Rabbit IgG
	Reactivity: Human, Mouse		
REF	Catalog Number: ABP51195	LOT	Lot Number: Refer to product label
	Formulation: Liquid		Concentration: 1 mg/ml
	Storage: Store at -20°C. Avoid repeated freeze / thaw cycles.		Note: Contain sodium azide.

Background: The downstream of kinase family (Dok-1-7) are members of a class of "docking" proteins that include the tyrosine kinase substrates IRS-1 and Cas, which contain multiple tyrosine residues and putative SH2 binding sites. Dok-4, Dok-5 and Dok-6 are more similar to each other than to the other Dok family members, and may constitute a subfamily of the DOK genes. Dok-5 is a tyrosine kinase substrate that enhances c-Ret-dependent activation of mitogen-activated protein kinase (MAPK). Dok-5 transcript is abundant in muscle and increases during T cell activation. Dok-5 protein undergoes tyrosine phosphorylation in response to insulin and insulin-like growth factor-1. Dok-6 is highly expressed in the developing central nervous system. It associates with Ret to transduce Ret-mediated processes such as axonal projection.

Application Notes: Optimal working dilutions should be determined experimentally by the investigator. Suggested starting dilutions are as follows: WB (1:500-1:2000), IHC-P (1:100-1:300), IF (1:200-1:1000), ELISA (1:10000). Not yet tested in other applications.

Storage Buffer: PBS containing 50% Glycerol, 0.5% BSA and 0.02% Sodium Azide.

Storage Instructions: Stable for one year at -20°C from date of shipment. For maximum recovery of product, centrifuge the original vial after thawing and prior to removing the cap. Aliquot to avoid repeated freezing and thawing.

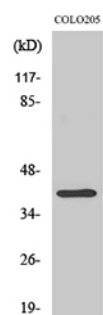


Fig. Western Blot analysis of various cells using Dok-6 Polyclonal Antibody.

Note: The product listed herein is for research use only and is not intended for use in human or clinical diagnosis. Suggested applications of our products are not recommendations to use our products in violation of any patent or as a license. We cannot be responsible for patent infringements or other violations that may occur with the use of this product.