



Dbf4 Polyclonal Antibody

Cat #: ABP51149

Size: 30µl /100µl /200µl

Product Information

	Product Name: Dbf4 Polyclonal Antibody		
	Applications: WB, IHC-P, ELISA		Isotype: Rabbit IgG
	Reactivity: Human, Mouse, Monkey		
REF	Catalog Number: ABP51149	LOT	Lot Number: Refer to product label
	Formulation: Liquid		Concentration: 1 mg/ml
	Storage: Store at -20°C. Avoid repeated freeze / thaw cycles.		Note: Contain sodium azide.

Background: The Dbf4/Cdc7 protein kinase is essential for the activation of replication origins during S phase. Cdc7-Dbf4 efficiently phosphorylates several proteins that are required for the initiation of DNA replication, including five of the six minichromosome maintenance (Mcm) proteins and the p180 subunit of DNA polymerase α -primase. This protein complex consists of the catalytic subunit Cdc7 associating with the regulatory and activating subunit Dbf4, and the kinase activity of the complex is regulated throughout the cell cycle mainly by fluctuating levels of Dbf4. Cdc7 is consistently expressed throughout the cell cycle, while the expression of Dbf4 is absent during G1 phase and accumulates during S and G2 phases. The anaphase-promoting complex rapidly degrades Dbf4 at the time of chromosome segregation, and the stability of Dbf4 remains low during pre-Start G1 phase. The coordinated degradation of Dbf4 and the time of chromosomes separation is important to ensuring that prereplicative complexes, which assemble after chromosome segregation, do not immediately re-fire.

Application Notes: Optimal working dilutions should be determined experimentally by the investigator. Suggested starting dilutions are as follows: WB (1:500-1:2000), IHC-P (1:100-1:300), ELISA (1:10000). Not yet tested in other applications.

Storage Buffer: PBS containing 50% Glycerol, 0.5% BSA and 0.02% Sodium Azide.

Storage Instructions: Stable for one year at -20°C from date of shipment. For maximum recovery of product, centrifuge the original vial after thawing and prior to removing the cap. Aliquot to avoid repeated freezing and thawing.

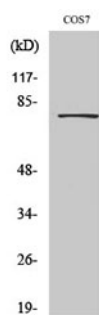


Fig. Western Blot analysis of various cells using Dbf4 Polyclonal Antibody.

Note: The product listed herein is for research use only and is not intended for use in human or clinical diagnosis. Suggested applications of our products are not recommendations to use our products in violation of any patent or as a license. We cannot be responsible for patent infringements or other violations that may occur with the use of this product.