



## DACA-1 Polyclonal Antibody

Cat #: ABP51141

Size: 30µl /100µl /200µl

### Product Information

	<b>Product Name:</b> DACA-1 Polyclonal Antibody		
	<b>Applications:</b> WB, IHC-P, ELISA		<b>Isotype:</b> Rabbit IgG
	<b>Reactivity:</b> Human, Mouse, Rat		
<b>REF</b>	<b>Catalog Number:</b> ABP51141	<b>LOT</b>	<b>Lot Number:</b> Refer to product label
	<b>Formulation:</b> Liquid		<b>Concentration:</b> 1 mg/ml
	<b>Storage:</b> Store at -20°C. Avoid repeated freeze / thaw cycles.		<b>Note:</b> Contain sodium azide.

**Background:** The YTH domain family protein family (YTHDF) includes YTHDF1, YTHDF2 and TYHDF3. YTHDF1, also designated Dermatomyositis associated with cancer putative autoantigen 1 (DACA-1), is a 559 amino acid protein that contains one YTH domain, which is a potential RNA binding domain. YTHDF2, also designated High-glucose-regulated protein 8, CLL-associated antigen KW-14 or Renal carcinoma antigen NY-REN-2, is a 579 amino acid protein that also contains one YTH domain. YTHDF3 is a 585 amino acid protein that also contains one YTH domain. The gene encoding YTHDF1 maps to chromosome 20, which houses over 600 genes, some of which are associated with Creutzfeldt-Jakob disease, amyotrophic lateral sclerosis, spinal muscular atrophy, ring chromosome 20 epilepsy syndrome and Alagille syndrome. Additionally, chromosome 20 contains a region with numerous genes which are thought important for seminal production and may be potential targets for male contraception.

**Application Notes:** Optimal working dilutions should be determined experimentally by the investigator. Suggested starting dilutions are as follows: WB (1:500-1:2000), IHC-P (1:100-1:300), ELISA (1:5000). Not yet tested in other applications.

**Storage Buffer:** PBS containing 50% Glycerol, 0.5% BSA and 0.02% Sodium Azide.

**Storage Instructions:** Stable for one year at -20°C from date of shipment. For maximum recovery of product, centrifuge the original vial after thawing and prior to removing the cap. Aliquot to avoid repeated freezing and thawing.

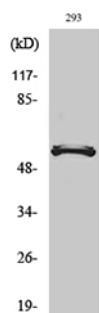


Fig. Western Blot analysis of various cells using DACA-1 Polyclonal Antibody.

**Note:** The product listed herein is for research use only and is not intended for use in human or clinical diagnosis. Suggested applications of our products are not recommendations to use our products in violation of any patent or as a license. We cannot be responsible for patent infringements or other violations that may occur with the use of this product.