



## Cyclin L1 Polyclonal Antibody

Cat #: ABP51088

Size: 30µl /100µl /200µl

### Product Information

	<b>Product Name:</b> Cyclin L1 Polyclonal Antibody		
	<b>Applications:</b> WB, IHC-P, ELISA		<b>Isotype:</b> Rabbit IgG
	<b>Reactivity:</b> Human, Mouse, Rat		
<b>REF</b>	<b>Catalog Number:</b> ABP51088	<b>LOT</b>	<b>Lot Number:</b> Refer to product label
	<b>Formulation:</b> Liquid		<b>Concentration:</b> 1 mg/ml
	<b>Storage:</b> Store at -20°C. Avoid repeated freeze / thaw cycles.		<b>Note:</b> Contain sodium azide.

**Background:** Cell proliferation is controlled at specific stages of the cell cycle by distinct protein kinase complexes. These complexes consist of a catalytic subunit associating with a specific regulatory subunit to form the active kinase. The cyclins, which include cyclin A, B, C, D, E, F, G, H, I, K, L, T and their related proteins, including Dbf4, comprise the regulatory subunits of these kinase complexes. The controlled activation of the kinase complexes at various intervals of the cell cycle is regulated by the availability of the cyclins to the catalytic subunit. Unlike the catalytic subunit, which is expressed continually, the expression and stability of the regulatory subunit fluctuates depending on the stage of the cell cycle and, thereby, regulates the kinase activity. Cyclin L1 is a ubiquitously expressed nuclear protein that can be detected in higher levels in thymus. In neck and head squamous cell carcinomas, cyclin L1 can be overexpressed and is therefore often considered a proto-oncogene. It interacts with POLR2A, CDC2L and SFRS2. Cyclin L1 plays a role in the mRNA splicing process regulation.

**Application Notes:** Optimal working dilutions should be determined experimentally by the investigator. Suggested starting dilutions are as follows: WB (1:500-1:2000), IHC-P (1:100-1:300), ELISA (1:10000). Not yet tested in other applications.

**Storage Buffer:** PBS containing 50% Glycerol, 0.5% BSA and 0.02% Sodium Azide.

**Storage Instructions:** Stable for one year at -20°C from date of shipment. For maximum recovery of product, centrifuge the original vial after thawing and prior to removing the cap. Aliquot to avoid repeated freezing and thawing.

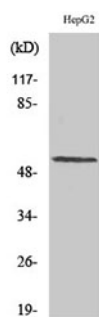


Fig. Western Blot analysis of various cells using Cyclin L1 Polyclonal Antibody diluted at 1:1000.

**Note:** The product listed herein is for research use only and is not intended for use in human or clinical diagnosis. Suggested applications of our products are not recommendations to use our products in violation of any patent or as a license. We cannot be responsible for patent infringements or other violations that may occur with the use of this product.