



CCP2 Polyclonal Antibody

Cat #: ABP50890

Size: 30µl /100µl /200µl

Product Information

	Product Name: CCP2 Polyclonal Antibody		
	Applications: WB, IHC-P, ELISA		Isotype: Rabbit IgG
	Reactivity: Human, Mouse		
REF	Catalog Number: ABP50890	LOT	Lot Number: Refer to product label
	Formulation: Liquid		Concentration: 1 mg/ml
	Storage: Store at -20°C. Avoid repeated freeze / thaw cycles.		Note: Contain sodium azide.

Background: The peptidase M14 family of carboxypeptidases (CPs) are involved in various functions throughout the body which include digestion of food and biosynthesis of peptides that function in intercellular signaling. CCP2 (cytosolic carboxypeptidase 2), also known as AGBL2 (ATP/GTP binding protein-like 2), is a 902 amino acid cytoplasmic protein belonging to the peptidase M14 family. CCP2 is considered a metallo-carboxypeptidase that may play a role in the processing of tubulin. CCP2 binds one zinc ion per subunit as a cofactor and exists as three alternatively spliced isoforms. The gene encoding CCP2 is located on human chromosome 11p11.2. Chromosome 11 houses over 1,400 genes and comprises nearly 4% of the human genome. Jervell and Lange-Nielsen syndrome, Jacobsen syndrome, Niemann-Pick disease, hereditary angioedema and Smith-Lemli-Opitz syndrome are associated with defects in genes that maps to chromosome 11.

Application Notes: Optimal working dilutions should be determined experimentally by the investigator. Suggested starting dilutions are as follows: WB (1:500-1:2000), IHC-P (1:100-1:300), ELISA (1:40000). Not yet tested in other applications.

Storage Buffer: PBS containing 50% Glycerol, 0.5% BSA and 0.02% Sodium Azide.

Storage Instructions: Stable for one year at -20°C from date of shipment. For maximum recovery of product, centrifuge the original vial after thawing and prior to removing the cap. Aliquot to avoid repeated freezing and thawing.

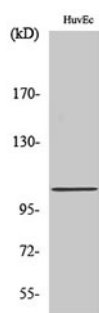


Fig. Western Blot analysis of various cells using CCP2 Polyclonal Antibody diluted at 1:2000.

Note: The product listed herein is for research use only and is not intended for use in human or clinical diagnosis. Suggested applications of our products are not recommendations to use our products in violation of any patent or as a license. We cannot be responsible for patent infringements or other violations that may occur with the use of this product.