



BAM32 Polyclonal Antibody

Cat #: ABP50748

Size: 30µl /100µl /200µl

Product Information

	Product Name: BAM32 Polyclonal Antibody		
	Applications: WB , IHC-P, ELISA		Isotype: Rabbit IgG
	Reactivity: Human, Mouse		
REF	Catalog Number: ABP50748	LOT	Lot Number: Refer to product label
	Formulation: Liquid		Concentration: 1 mg/ml
	Storage: Store at -20°C. Avoid repeated freeze / thaw cycles.		Note: Contain sodium azide.

Background: B cell adapter molecule (BAM32) is also designated dual adapter for phosphotyrosine and 3-phosphotyrosine and 3-phosphoinositide (DAPP1) or B lymphocyte adapter protein. BAM32 is a B cell-associated adapter that is crucial for B cell antigen receptor signaling regulation. BAM32 interacts with PtdIns and PLC g2 and, upon B cell activation, the protein is phosphorylated on tyrosine residues. It is a mainly cytoplasmic protein that can translocate to the cell membrane after cell stimulation. BAM32, which contains one PH domain and one SH2 domain, is primarily expressed in placenta and lung tissues, but can also be detected in heart, liver, pancreas and brain.

Application Notes: Optimal working dilutions should be determined experimentally by the investigator. Suggested starting dilutions are as follows: WB (1:500-1:2000), IHC-P (1:100-1:300), ELISA (1:10000). Not yet tested in other applications.

Storage Buffer: PBS containing 50% Glycerol, 0.5% BSA and 0.02% Sodium Azide.

Storage Instructions: Stable for one year at -20°C from date of shipment. For maximum recovery of product, centrifuge the original vial after thawing and prior to removing the cap. Aliquot to avoid repeated freezing and thawing.

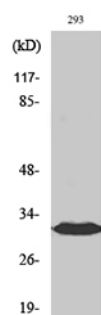


Fig. Western Blot analysis of various cells using BAM32 Polyclonal Antibody.

Note: The product listed herein is for research use only and is not intended for use in human or clinical diagnosis. Suggested applications of our products are not recommendations to use our products in violation of any patent or as a license. We cannot be responsible for patent infringements or other violations that may occur with the use of this product.