



AZI1 Polyclonal Antibody

Cat #: ABP50740

Size: 30µl /100µl /200µl

Product Information

	Product Name: AZI1 Polyclonal Antibody		
	Applications: WB , IHC-P, ELISA		Isotype: Rabbit IgG
	Reactivity: Human		
REF	Catalog Number: ABP50740	LOT	Lot Number: Refer to product label
	Formulation: Liquid		Concentration: 1 mg/ml
	Storage: Store at -20°C. Avoid repeated freeze / thaw cycles.		Note: Contain sodium azide.

Background: AZI1, also known as 5-azacytidine-induced protein 1, is a 1,083 amino acid protein that may play a role in spermatogenesis. AZI1 is most highly expressed in spinal cord, followed by testis, ovary, amygdala, cerebellum and thalamus. Low expression is present in other adult and fetal tissues and specific adult brain regions. AZI1 gene transcription begins in pachytene spermatocytes and expression of the gene is induced in cultivated fibroblasts on treatment with 5-azacytidine, which is known to lead to the demethylation of genomic DNA. The AZI1 gene is conserved in dog, cow, mouse, rat, chicken, and zebrafish, and exists as two alternatively spliced isoforms. AZI1 contains one IQ domain, and the gene that encodes it maps to human chromosome 17q25.3. Chromosome 17 makes up over 2.5% of the human genome with about 81 million bases encoding over 1,200 genes. Alexander disease, Birt-Hogg-Dube syndrome and Canavan disease are also associated with chromosome 17.

Application Notes: Optimal working dilutions should be determined experimentally by the investigator. Suggested starting dilutions are as follows: WB (1:500-1:2000), IHC-P (1:100-1:300), ELISA (1:40000). Not yet tested in other applications.

Storage Buffer: PBS containing 50% Glycerol, 0.5% BSA and 0.02% Sodium Azide.

Storage Instructions: Stable for one year at -20°C from date of shipment. For maximum recovery of product, centrifuge the original vial after thawing and prior to removing the cap. Aliquot to avoid repeated freezing and thawing.

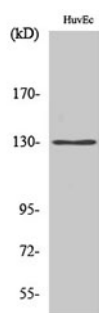


Fig. Western Blot analysis of various cells using AZI1 Polyclonal Antibody.

Note: The product listed herein is for research use only and is not intended for use in human or clinical diagnosis. Suggested applications of our products are not recommendations to use our products in violation of any patent or as a license. We cannot be responsible for patent infringements or other violations that may occur with the use of this product.