



AQP12 Polyclonal Antibody

Cat #: ABP50688

Size: 30µl /100µl /200µl

Product Information

	Product Name: AQP12 Polyclonal Antibody		
	Applications: WB , ELISA		Isotype: Rabbit IgG
	Reactivity: Human		
REF	Catalog Number: ABP50688	LOT	Lot Number: Refer to product label
	Formulation: Liquid		Concentration: 1 mg/ml
	Storage: Store at -20°C. Avoid repeated freeze / thaw cycles.		Note: Contain sodium azide.

Background: Members of the aquaporin family are multiple pass transmembrane proteins that form homotetramers to facilitate the flow of water across the plasma membrane. At least thirteen aquaporins have been identified to date (AQP0 through AQP12) and together this family of small, hydrophobic proteins plays a role in an array of biological processes that include urine formation, cell motility, fertilization, cell junction formation and regulation of overall water homeostasis.

Application Notes: Optimal working dilutions should be determined experimentally by the investigator. Suggested starting dilutions are as follows: WB (1:500-1:2000), ELISA (1:40000). Not yet tested in other applications.

Storage Buffer: PBS containing 50% Glycerol, 0.5% BSA and 0.02% Sodium Azide.

Storage Instructions: Stable for one year at -20°C from date of shipment. For maximum recovery of product, centrifuge the original vial after thawing and prior to removing the cap. Aliquot to avoid repeated freezing and thawing.

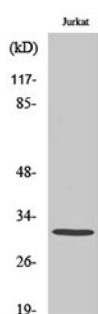


Fig. Western Blot analysis of various cells using AQP12 Polyclonal Antibody diluted at 1:1000.

Note: The product listed herein is for research use only and is not intended for use in human or clinical diagnosis. Suggested applications of our products are not recommendations to use our products in violation of any patent or as a license. We cannot be responsible for patent infringements or other violations that may occur with the use of this product.