



## ANKRD30A Polyclonal Antibody

Cat #: ABP50654

Size: 30µl /100µl /200µl

### Product Information

	<b>Product Name:</b> ANKRD30A Polyclonal Antibody		
	<b>Applications:</b> WB , IHC-P, ELISA		<b>Isotype:</b> Rabbit IgG
	<b>Reactivity:</b> Human		
<b>REF</b>	<b>Catalog Number:</b> ABP50654	<b>LOT</b>	<b>Lot Number:</b> Refer to product label
	<b>Formulation:</b> Liquid		<b>Concentration:</b> 1 mg/ml
	<b>Storage:</b> Store at -20°C. Avoid repeated freeze / thaw cycles.		<b>Note:</b> Contain sodium azide.

**Background:** Ankyrins are membrane adaptor molecules that play important roles in coupling integral membrane proteins to the spectrin-based cytoskeleton network. Mutations of ankyrin genes lead to severe genetic diseases, such as fatal cardiac arrhythmias and hereditary spherocytosis. ANKRD30A (ankyrin repeat domain 30A), also known as serologically defined breast cancer antigen NY-BR-1, is a 1,397 amino acid coiled-coil protein. Containing six ANK repeats and thirty-seven exons, ANKRD30A is a distant homolog of the POTE family. Initiated by either Dnmt1 or Met-57, ANKRD30A is highly expressed in breast and testis, and faintly in placenta. Present in 80% of breast cancers, but not in other types of tumors, ANKRD30A is a differentiation antigen and a potential target for antibody-based therapies in breast cancers.

**Application Notes:** Optimal working dilutions should be determined experimentally by the investigator. Suggested starting dilutions are as follows: WB (1:500-1:2000), IHC-P (1:100-1:300), ELISA (1:5000). Not yet tested in other applications.

**Storage Buffer:** PBS containing 50% Glycerol, 0.5% BSA and 0.02% Sodium Azide.

**Storage Instructions:** Stable for one year at -20°C from date of shipment. For maximum recovery of product, centrifuge the original vial after thawing and prior to removing the cap. Aliquot to avoid repeated freezing and thawing.

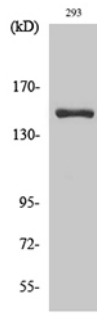


Fig. Western Blot analysis of various cells using ANKRD30A Polyclonal Antibody diluted at 1:2000.

**Note:** The product listed herein is for research use only and is not intended for use in human or clinical diagnosis. Suggested applications of our products are not recommendations to use our products in violation of any patent or as a license. We cannot be responsible for patent infringements or other violations that may occur with the use of this product.