



ALMS1 Polyclonal Antibody

Cat #: ABP50643

Size: 30µl /100µl /200µl

Product Information

	Product Name: ALMS1 Polyclonal Antibody		
	Applications: WB , IHC-P, ELISA		Isotype: Rabbit IgG
	Reactivity: Human		
REF	Catalog Number: ABP50643	LOT	Lot Number: Refer to product label
	Formulation: Liquid		Concentration: 1 mg/ml
	Storage: Store at -20°C. Avoid repeated freeze / thaw cycles.		Note: Contain sodium azide.

Background: ALMS1 encodes a protein containing a large tandem-repeat domain as well as additional low complexity regions. The encoded protein (ALMS1, centrosome and basal body associated protein) functions in microtubule organization, particularly in the formation and maintenance of cilia. Mutations ALMS1 cause Alstrom syndrome. There is a pseudogene for ALMS1 located adjacent in the same region of chromosome 2. Alternative splice variants have been described but their full length nature has not been determined.

Application Notes: Optimal working dilutions should be determined experimentally by the investigator. Suggested starting dilutions are as follows: WB (1:500-1:2000), IHC-P (1:100-1:300), ELISA (1:40000). Not yet tested in other applications.

Storage Buffer: PBS containing 50% Glycerol, 0.5% BSA and 0.02% Sodium Azide.

Storage Instructions: Stable for one year at -20°C from date of shipment. For maximum recovery of product, centrifuge the original vial after thawing and prior to removing the cap. Aliquot to avoid repeated freezing and thawing.

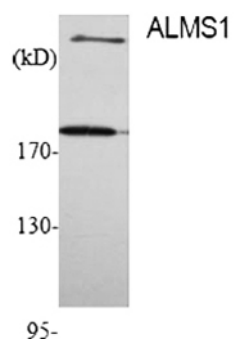


Fig. Western Blot analysis of various cells using ALMS1 Polyclonal Antibody.

Note: The product listed herein is for research use only and is not intended for use in human or clinical diagnosis. Suggested applications of our products are not recommendations to use our products in violation of any patent or as a license. We cannot be responsible for patent infringements or other violations that may occur with the use of this product.