



ADCK5 Polyclonal Antibody

Cat #: ABP50604

Size: 30µl /100µl /200µl

Product Information

	Product Name: ADCK5 Polyclonal Antibody		
	Applications: WB , IF, ELISA		Isotype: Rabbit IgG
	Reactivity: Human		
REF	Catalog Number: ABP50604	LOT	Lot Number: Refer to product label
	Formulation: Liquid		Concentration: 1 mg/ml
	Storage: Store at -20°C. Avoid repeated freeze / thaw cycles.		Note: Contain sodium azide.

Background: CABC1 (chaperone activity of bc1 complex-like), also known as COQ8 or ADCK3 (aarF domain-containing protein kinase 3) is a 647 amino acid mitochondrial protein that belongs to the ADCK protein kinase. Ubiquitously expressed with higher expression in heart and skeletal muscle, CABC1 is thought to function as a chaperone in the proper assembly of protein complexes found in the respiratory chain. CABC1 expression is induced both in response to DNA damage and by the tumor suppressor p53. When CABC1 expression is inhibited, p53-induced apoptosis is partially suppressed, suggesting a possible role for CABC1 in tumor suppression. Mutations in the gene encoding CABC1 may be implicated in ubiquinone deficiency which can lead to cerebellar ataxia and seizures. Four isoforms of CABC1 exist due to alternative splicing events. Other members of the ADCK protein kinase family include ADCK1, ADCK2, ADCK4 and ADCK5.

Application Notes: Optimal working dilutions should be determined experimentally by the investigator. Suggested starting dilutions are as follows: WB (1:500-1:2000), IF (1:200-1:1000), ELISA (1:20000). Not yet tested in other applications.

Storage Buffer: PBS containing 50% Glycerol, 0.5% BSA and 0.02% Sodium Azide.

Storage Instructions: Stable for one year at -20°C from date of shipment. For maximum recovery of product, centrifuge the original vial after thawing and prior to removing the cap. Aliquot to avoid repeated freezing and thawing.

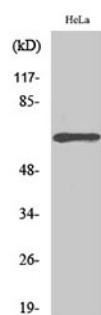


Fig. Western Blot analysis of various cells using ADCK5 Polyclonal Antibody.

Note: The product listed herein is for research use only and is not intended for use in human or clinical diagnosis. Suggested applications of our products are not recommendations to use our products in violation of any patent or as a license. We cannot be responsible for patent infringements or other violations that may occur with the use of this product.